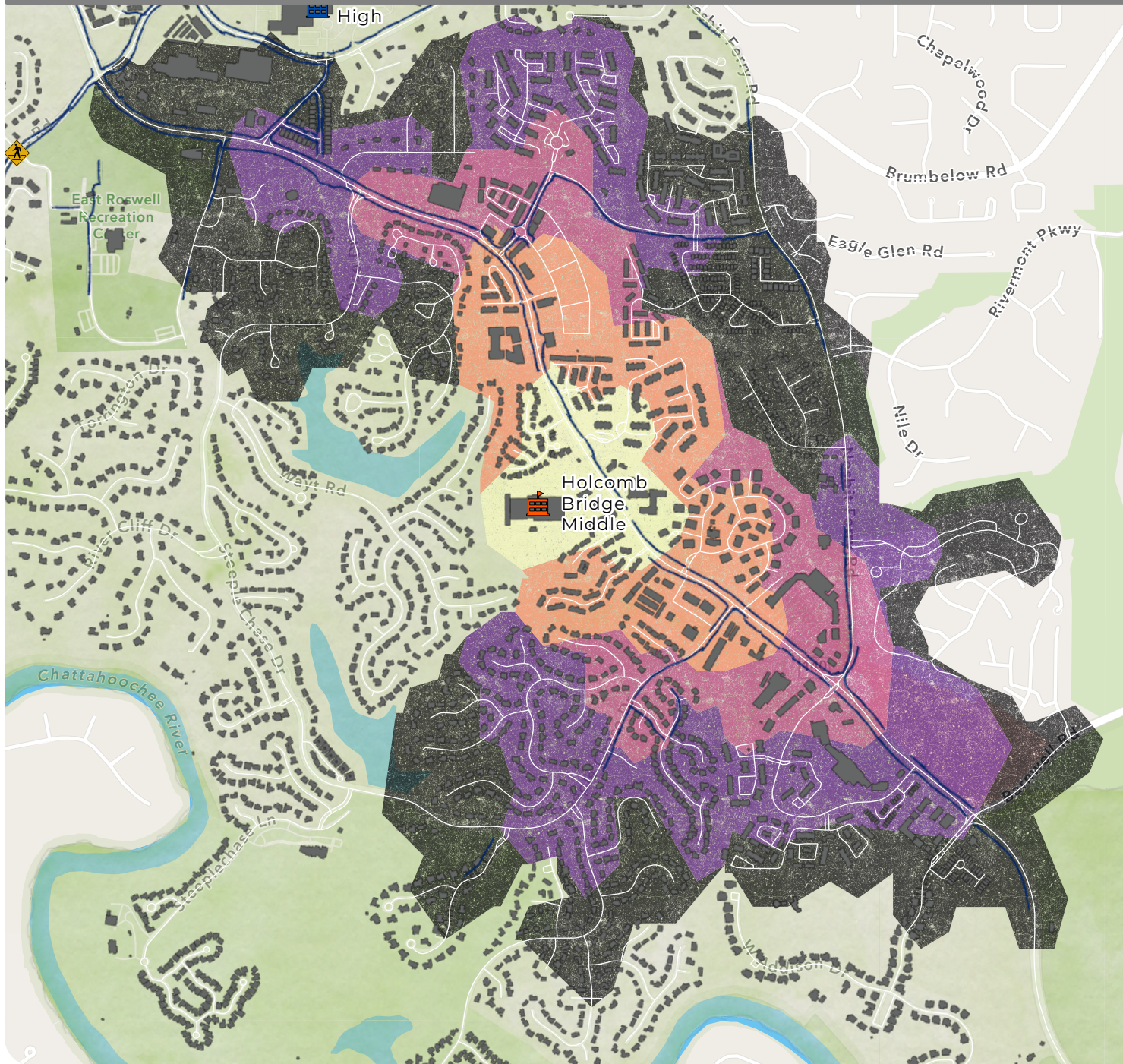


Walk, Bike, and Roll to School Roswell

Holcomb Bridge Middle School



Legend

Walking Time to School

Based on the walking speed of the average 11 year old

- 20 - 25 Minutes
- 15 - 20 Minutes
- 10 - 15 Minutes
- 5 - 10 Minutes
- 0 - 5 Minutes

Signalized Pedestrian Crossing

Schools

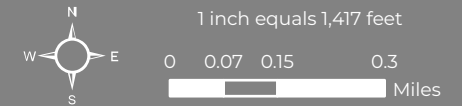
- Elementary School
- Middle School
- High School

Sidewalks

Roads

Buildings

Roswell City Limits



The City of Roswell attempts to create, use, and maintain accurate spatial data. However, the City of Roswell does not warrant the accuracy or currency of the data contained herein. All data is provided "as is," with all faults, without warranty of any kind, either expressed or implied, including, but not limited to, the implied warranties of merchantability or fitness for a particular purpose.

Sources: City of Roswell GIS (2023); City of Roswell Department of Transportation (2023); Esri Community Maps Contributors; City of Johns Creek, GA; Peachtree Corners Basemap; Esri; HERE; Garmin; SafeGraph; GeoTechnologies, Inc; METI/NASA, USGS, EPA, NPS, US Census Bureau, USDA, Esri, HERE, Garmin, SafeGraph, FAO, METI/NASA, USGS, EPA, NPS

