

Transportation Committee Meeting

September 30, 2020



400 Express Lanes IGA with GDOT

Action required: **Vote**



400 Express Lanes IGA

Contents of IGA:

- Items from MOU from late 2019
- HBR / GA 400 interchange rebuild accommodating future BRT station
- EL interchange with local access to get across
- Bridge aesthetics for HBR interchange and EL interchange (to match BCP)
 - More than just aesthetics
 - Enabling for future

400 Express Lanes IGA

Background:

- HBR / GA 400 most congested area – amongst highest crash locations
 - City has been wanting to improve this area for decades
 - 70,000 vehicles per day on HBR - plus another 190,000 on GA 400- pre COVID counts
- City's first major effort was initiating the Big Creek Parkway (BCP) project over a decade ago
 - BCP Bridge over GA 400 is a TSPLOST project (voted on by public - November 2016)
 - Project was explained to public as a local connection with no ramps to GA 400
- TSPLOST also allocated funds for future HBR interchange improvements

400 Express Lanes IGA

Background:

- GDOT initially wanted to attach their GA-400 EL ramps to Roswell's new BCP Bridge
 - City could not support due to project scope and justification as part of referendum
 - City chose to pause the BCP project (3 months) to negotiate with GDOT on Access Points and potential Transit component location.
- GDOT's policy is to not attach EL ramps to existing interchanges due to congestion issues at those locations
- There is physically not enough room between the existing (or future) interchange at HBR and the future BCP bridge (to the north) to add another interchange for EL access in between
 - Only other option in Roswell was to have the EL interchange south of HBR

400 Express Lanes IGA

Background:

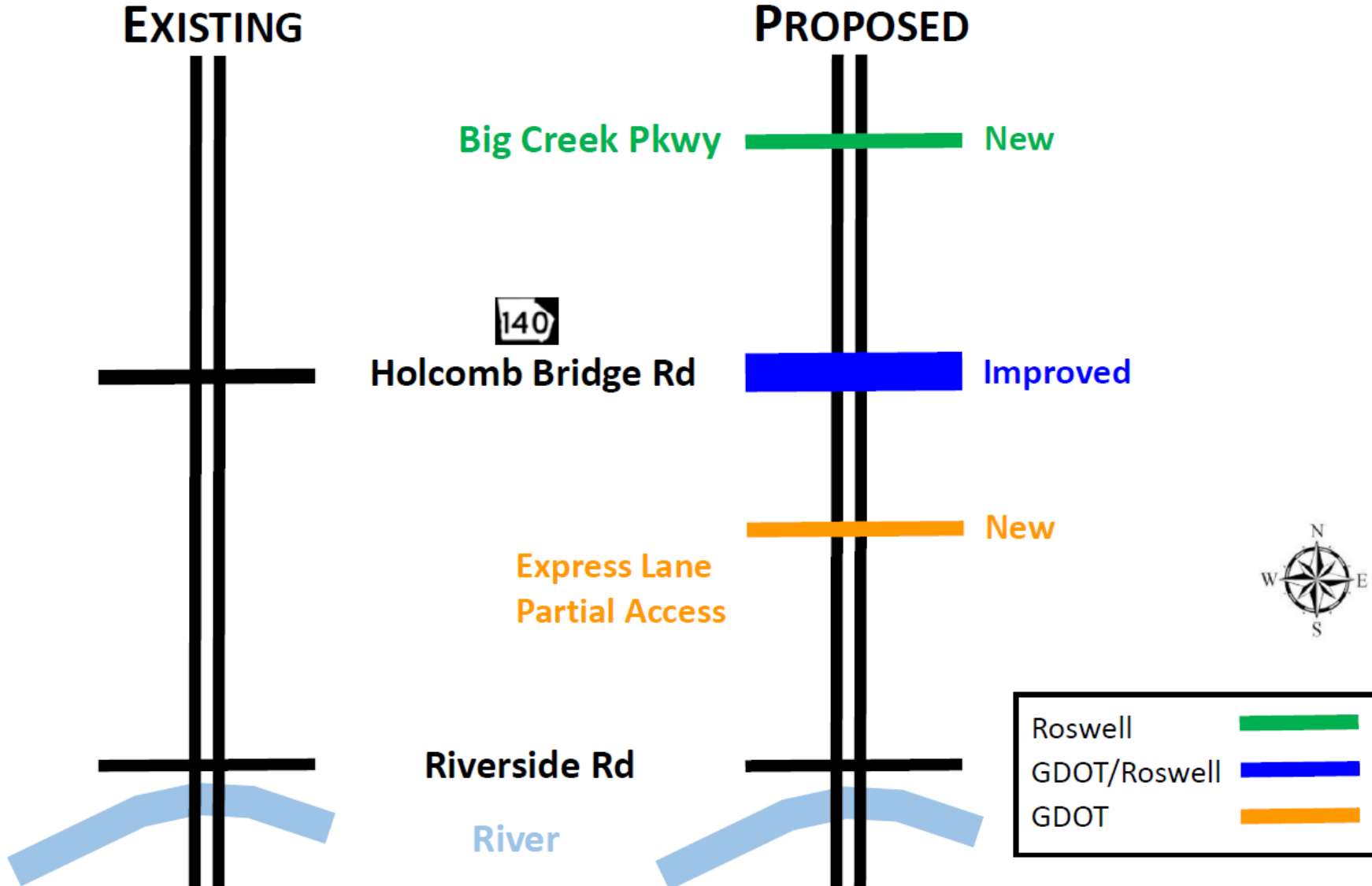
- EL interchange includes improvements to adjacent intersections to mitigate the impacts – shown in public meeting graphics
 - Improvements include:
 - Grimes Bridge Road at/near Dogwood Road / Old Dogwood Road (West of GA 400)
 - Raintree Drive
 - Market Blvd
 - Old Alabama Road
- EL interchange is a partial access interchange
 - Meaning EL traffic can get on to go south or get off to come from the south (to/from Atlanta)
 - There is no EL access to/from the north (to/from Alpharetta and Forsyth County)
 - Local traffic (peds, bikes, vehicles) will be able to get across (without paying toll)

400 Express Lanes IGA

Background:

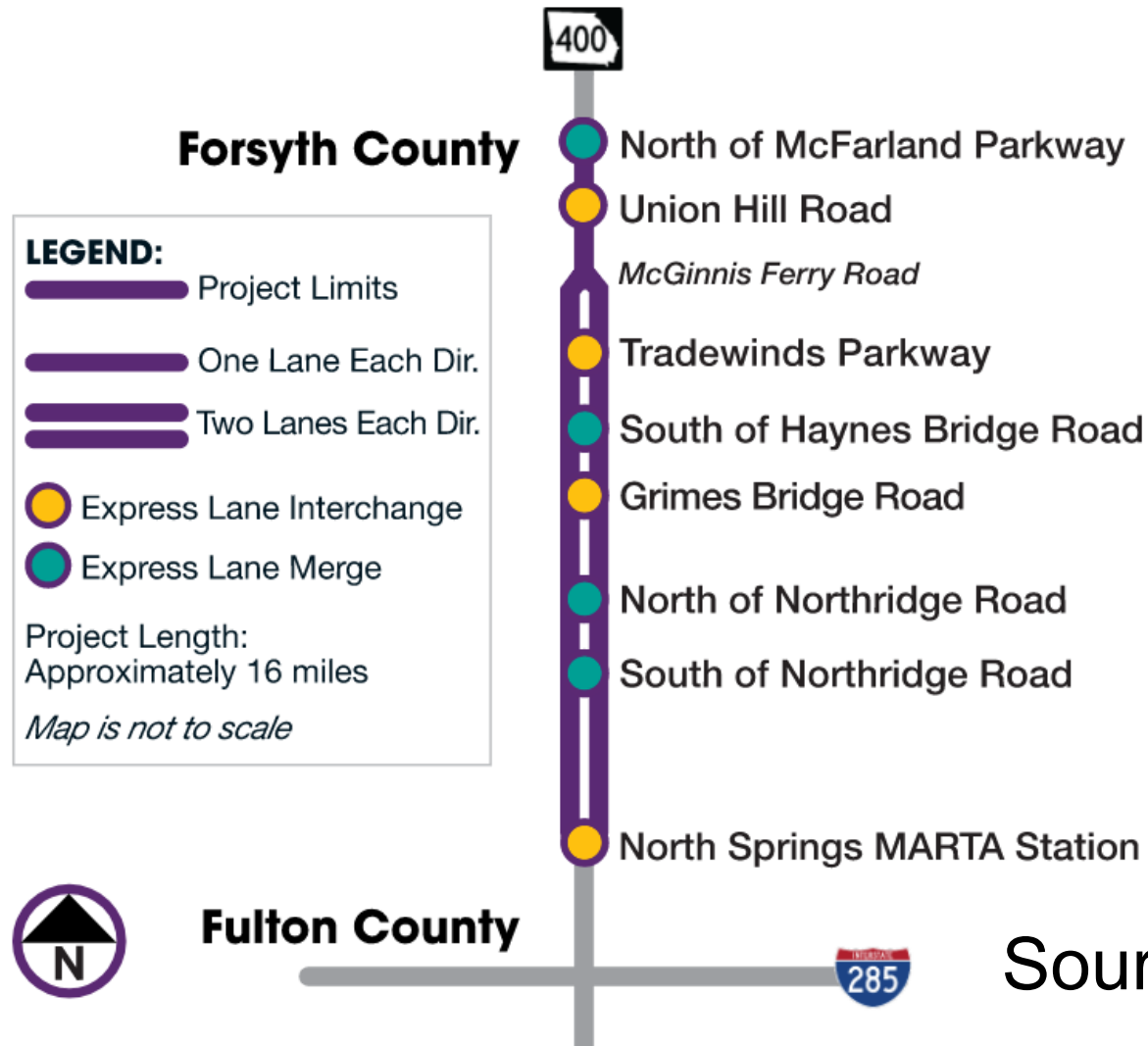
- EL to operate 24/7 – most use during congested hours
 - If general purpose lanes are flowing, HBR interchange is not congested, most will choose not to use EL interchange
 - Very little additional traffic on Grimes Bridge Road during off peak hours
- With addition of 2 new bridges over GA 400 and HBR interchange replacement, citizens can expect reduced congestion, improved safety and better East-West Connectivity
- GDOT is responsible for all traffic analysis
- GDOT will be responding to every comment received as a result of their recent public meetings as required by the official NEPA process and provide one consistent message

EAST-WEST CONNECTIONS ACROSS 400 CORRIDOR IN ROSWELL



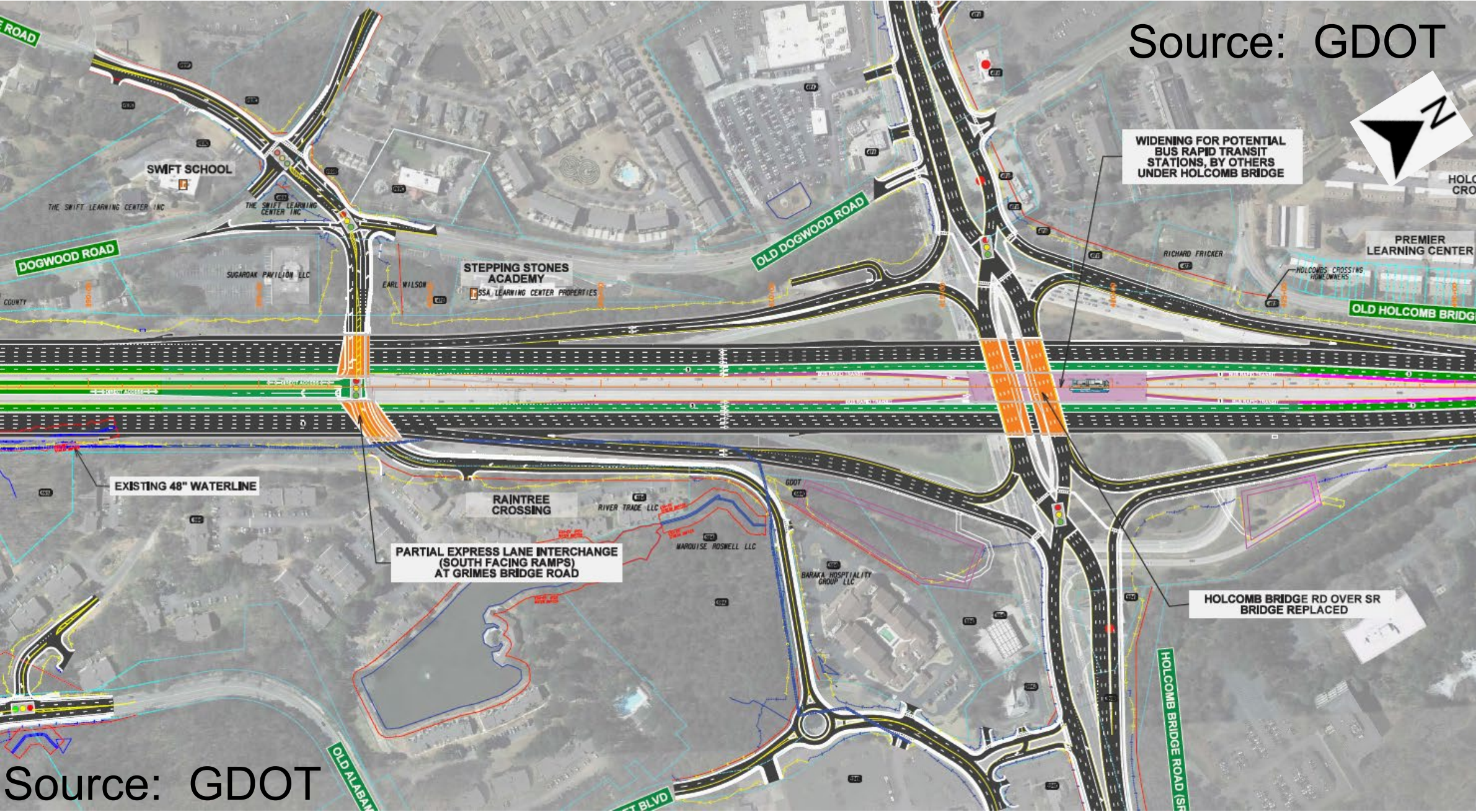
Overview of the GA-400 Express Lanes project

Interactive Access Point Map



Source: GDOT

Source: GDOT



WIDENING FOR POTENTIAL BUS RAPID TRANSIT STATIONS, BY OTHERS UNDER HOLCOMB BRIDGE

PREMIER LEARNING CENTER

OLD HOLCOMB BRIDGE

SWIFT SCHOOL

DOGWOOD ROAD

OLD DOGWOOD ROAD

STEPPING STONES ACADEMY

EXISTING 48" WATERLINE

RAINTREE CROSSING

PARTIAL EXPRESS LANE INTERCHANGE (SOUTH FACING RAMPS) AT GRIMES BRIDGE ROAD

HOLCOMB BRIDGE RD OVER SR BRIDGE REPLACED

Source: GDOT

Related **public meetings** or open to public meetings

- September 24, 2018 – Work Session - GDOT staff presented
- October 24, 2018 - Transportation Committee Meeting (item was deferred)
- November 13, 2018 - Mayor and Council Meeting
- **March 7, 2019 – GDOT held Public Information Open House (PIOH) - Doubletree Hotel in Roswell**
- March 27, 2019 - Transportation Committee Meeting
- June 26, 2019 - Transportation Committee Meeting
- July 24, 2019 - Transportation Committee Meeting
- **August 8, 2019 - Big Creek Pkwy Public Information Open House (PIOH)**
- August 12, 2019 - Work Session
- August 26, 2019 - Work Session
- September 9, 2019 - Mayor and Council Meeting
- October 30, 2019 - Work Session (bridge aesthetics for HBR Interchange and EL Access)
- November 20, 2019 - Transportation Committee Meeting (bridge aesthetics for HBR Interchange and EL Access)
- April 27, 2020 – Work Session (bridge aesthetics for HBR Interchange and EL Access)
- May 11, 2020 – Mayor and Council Meeting (bridge aesthetics for HBR Interchange and EL Access)
- **September 1, 2020 – GDOT Public meeting (Virtual Open House)**

400 Express Lanes IGA

Regarding payment obligations:

- EL interchange construction: Roswell obligation – zero
- HBR interchange reconstruction:
 - Roswell obligation \$15,000,000 (~ 40% of estimated total)
 - This will be paid in 7 equal yearly installments starting May 30, 2021
- HBR and EL interchanges aesthetic enhancements and other improvements:
 - Roswell obligation \$2,520,000
 - Went up \$420,000 from City Council approved amount (\$2,100,000)
 - Upfront payment by Roswell for full amount

400 Express Lanes IGA

Staff Recommendation:

Staff recommends following through with the vision established in the MOU and sign the IGA.

Financial Impact:

- \$15 million (via 7 annual payments)
- Bridge aesthetics payment (\$2.52m) is due upfront as a single payment

Next Step:

- Future Mayor and Council meeting



Questions?

Action required: **Vote**

