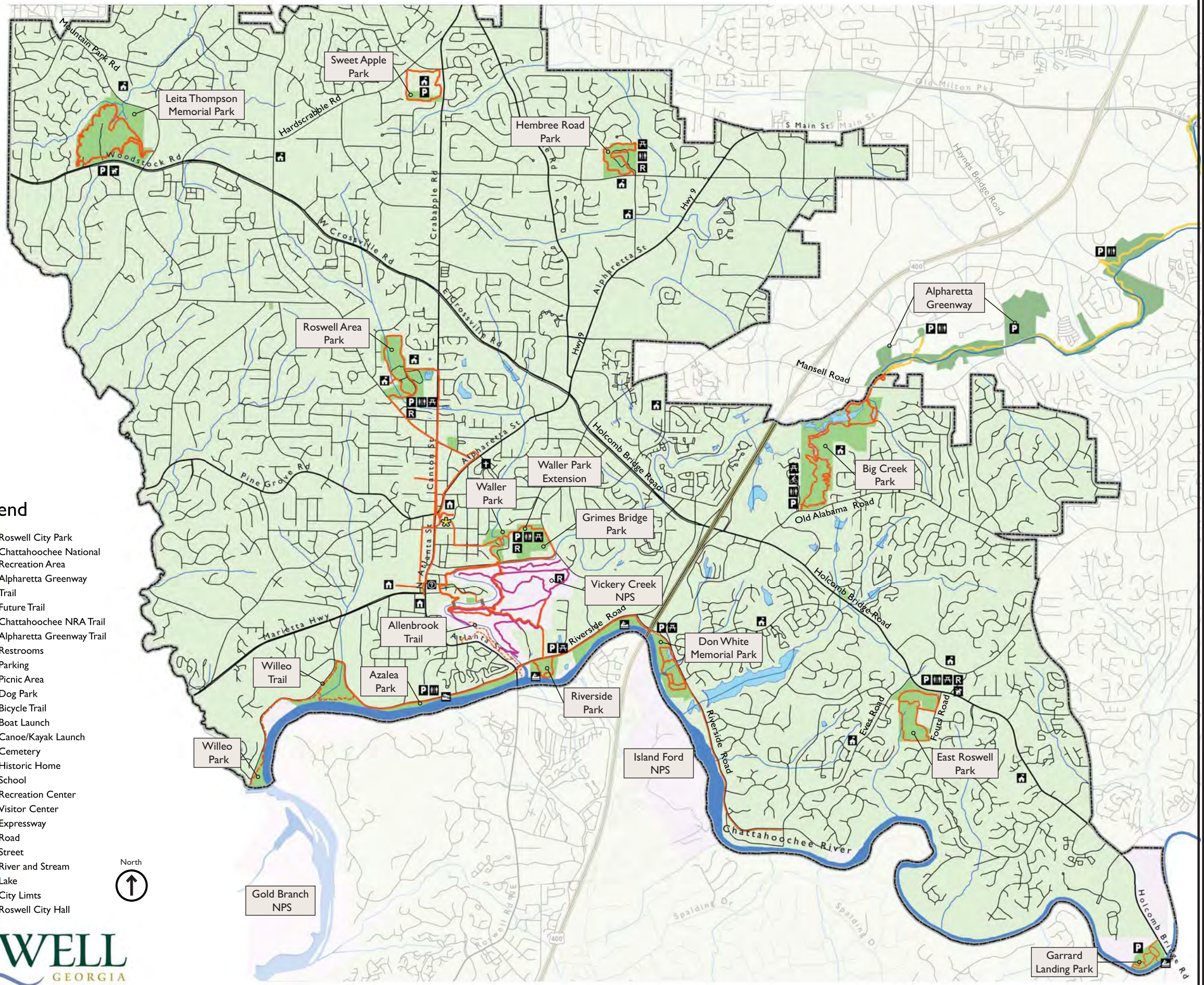


Legend

- Roswell City Park
- Chattahoochee National Recreation Area
- Alpharetta Greenway
- Trail
- Future Trail
- Chattahoochee NRA Trail
- Alpharetta Greenway Trail
- Restrooms
- Parking
- Picnic Area
- Dog Park
- Bicycle Trail
- Boat Launch
- Canoe/Kayak Launch
- Cemetery
- Historic Home
- School
- Recreation Center
- Visitor Center
- Expressway
- Road
- Street
- River and Stream
- Lake
- City Limits
- Roswell City Hall



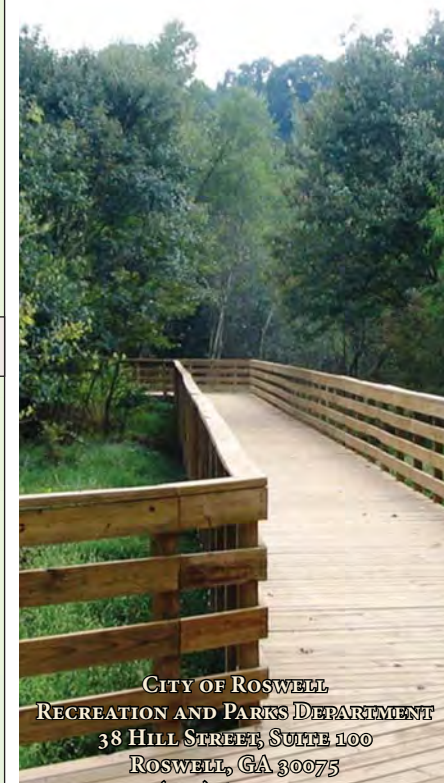
Gold Branch NPS

Island Ford NPS

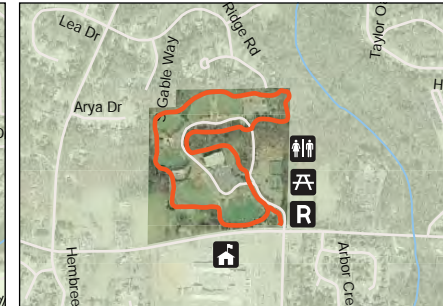
Garrard Landing Park



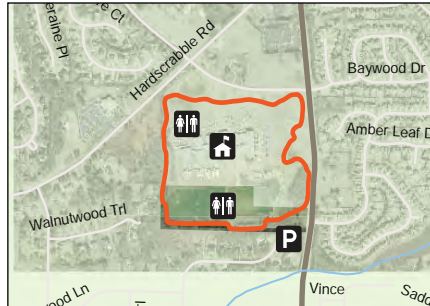
Recreation and Parks Department
TRAIL GUIDE
 CITY OF ROSWELL



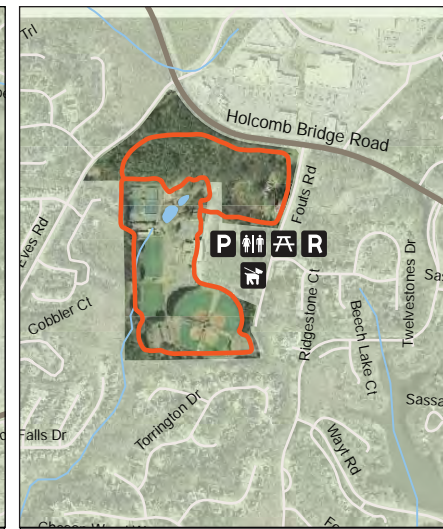
CITY OF ROSWELL
 RECREATION AND PARKS DEPARTMENT
 38 HILL STREET, SUITE 100
 ROSWELL, GA 30075
 (770) 641-3705



Hembree Park
 Walking Trail: 1.0 Mile



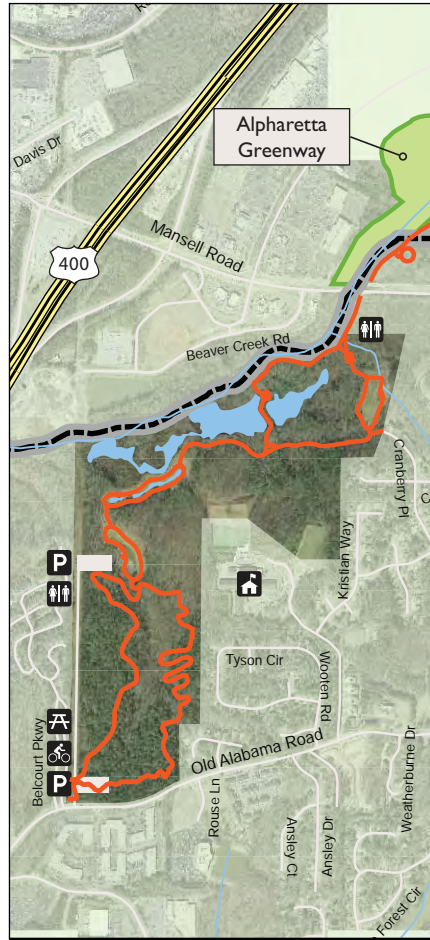
Sweet Apple Park
 Walking Trail: 1.1 Miles



East Roswell Park
 Walking Trail: 1.4 Miles



Leita Thompson Memorial Park
 Walking Trail: 2.3 Miles



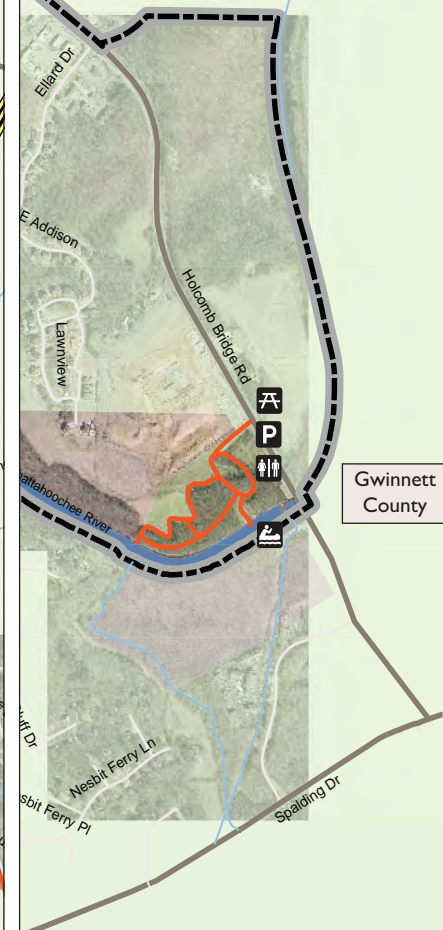
Big Creek Park
 Walking Trail: 1.0 Mile
 Concrete Multi-Purpose Trail: 1.3 Miles



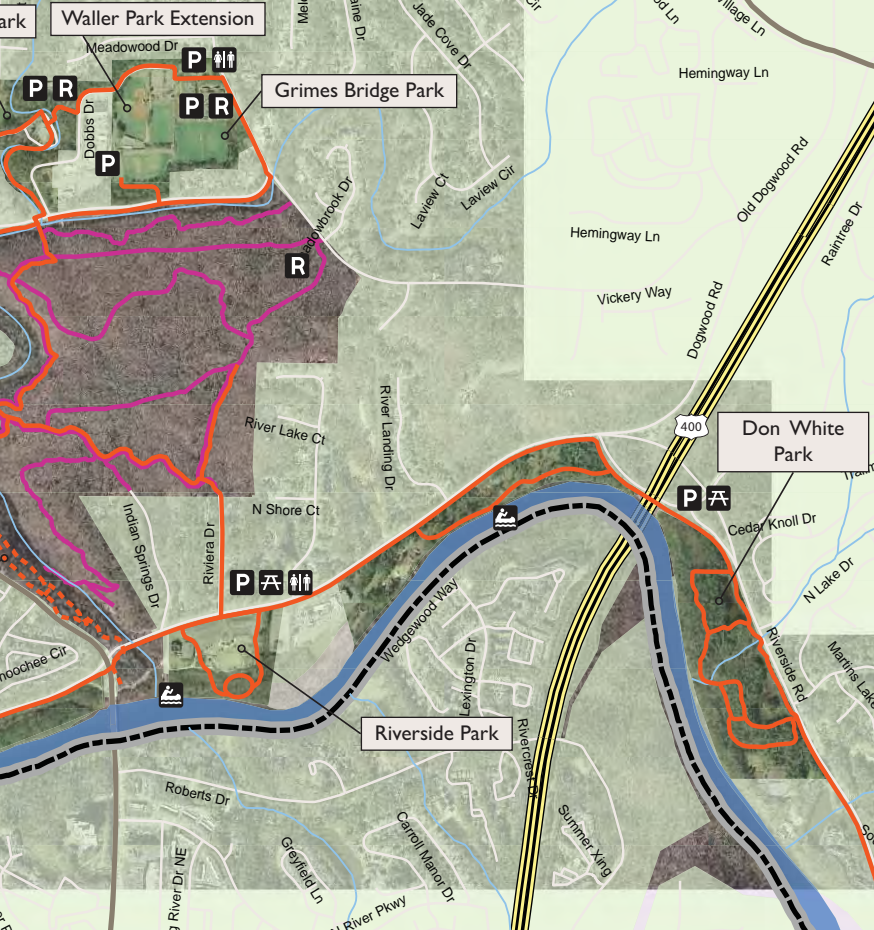
Roswell Area Park
 Walking Trail: 1.6 Miles
 Historic Trail: 7.4 Miles



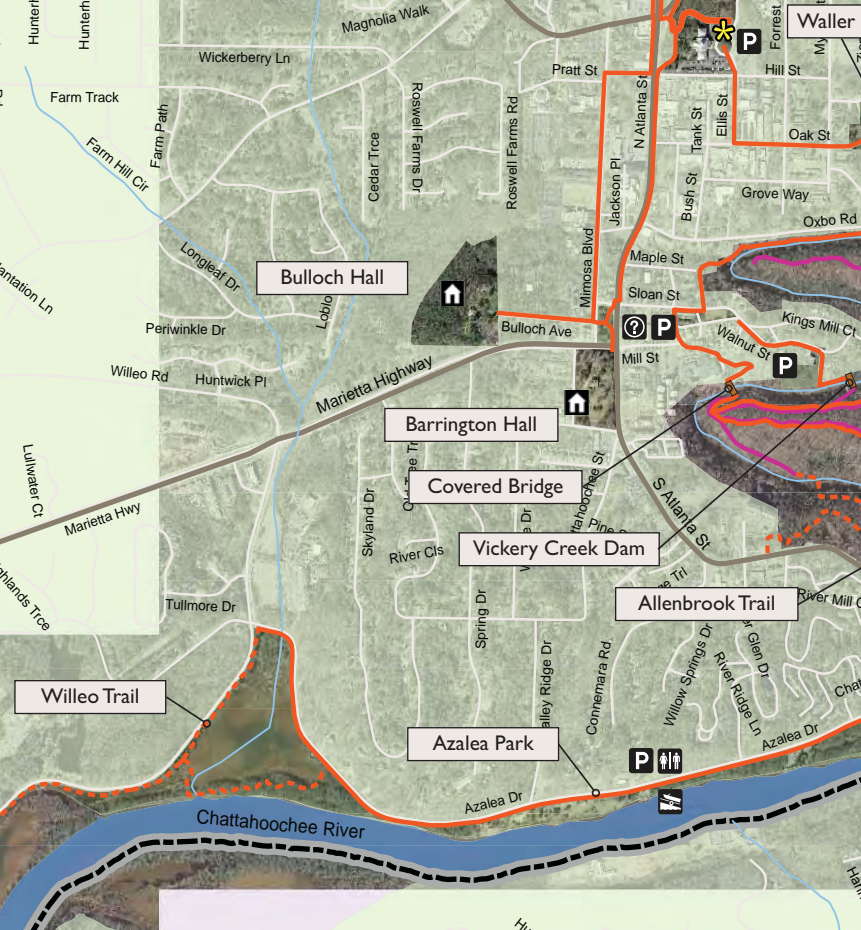
Smith Plantation



Garrard Landing Park
 Walking Trail: 0.6 Miles



Don White Park



Azalea Park - Chattahoochee National Recreation Area
 Roswell Trails: 10.2 Miles
 National Park Trails: 6.95

