

East Roswell Park Fouts Rd Entrance Project

Presented by: Jeff Leatherman



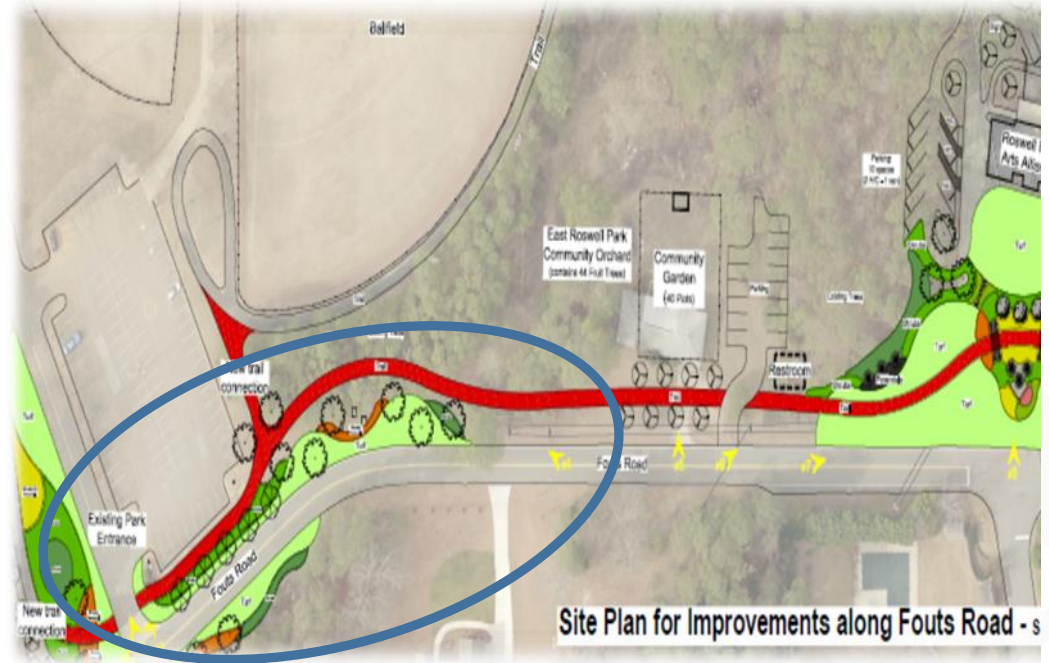
Park Project Location



Project Overview Phase 1 and 2



Parking and Future Dog Park Improvements (Phase 3)



Project Goals and Benefits

- Create a landscaped park entrance on Fouts Road for East Roswell Park.
- Create ADA access and parking for Art Center East.
- Decrease the number of driveway access locations to minimize vehicle and pedestrian crossings.
- Improve parking for Art Center East, trail access, trail connectivity and the dog park.
- Complete the pedestrian loop trail around East Roswell Park eliminating on street walking and improving pedestrian safety.
- Create an outdoor gathering area in front of the Art Center for classes, events and activities.
- Compliment the community entrance to the 12 Stones community.



Phase 1 Front Entrance Current Condition



Roswell GIS Aerial showing Plan View of East Side of ACE
Scale: 1" = 20'



Existing Panoramic Photo view showing East Side of ACE - Jan. 2019
Not to Scale

East Roswell Park - Existing Views @ Arts Center East

9000 Fouts Road - Roswell, Georgia 30076

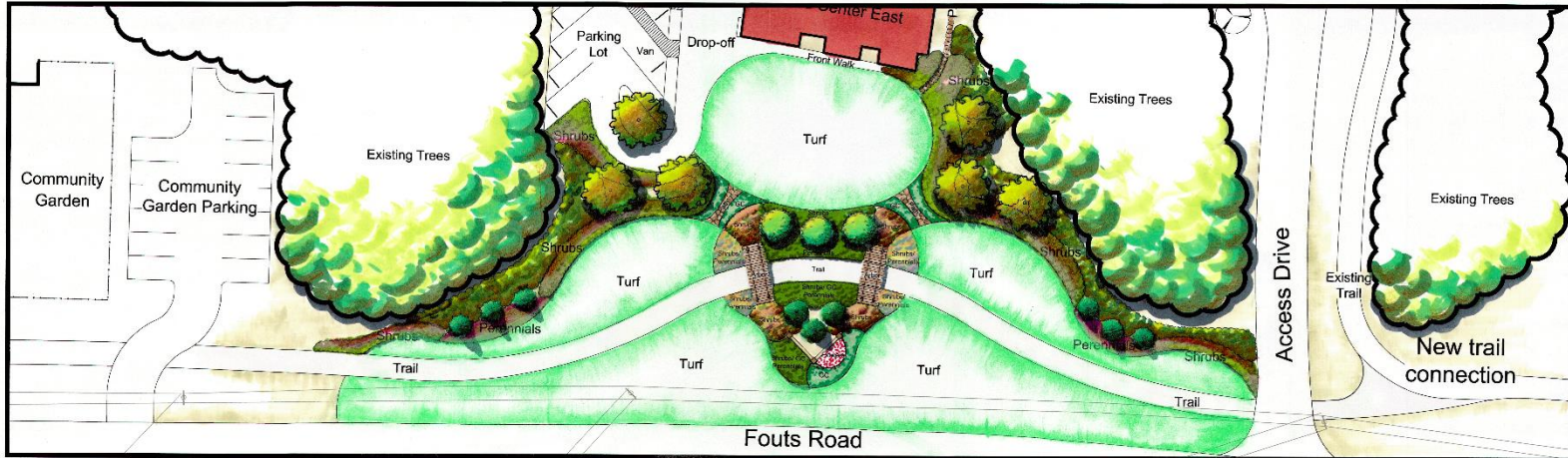
December 2018



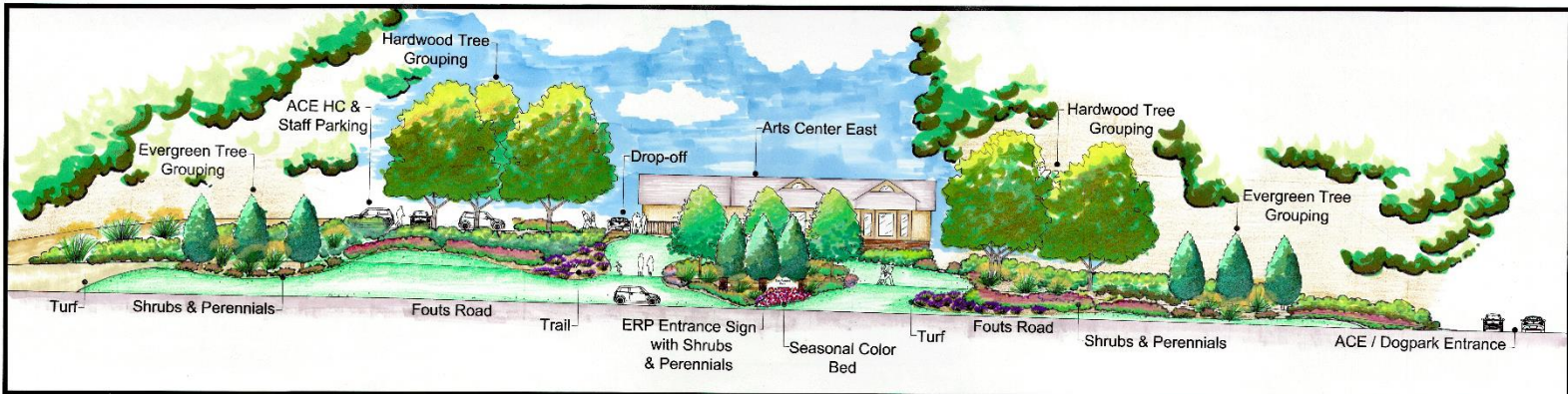
Phase 1 Front Entrance Current Condition



Phase 1 Final Construction Elevation



Proposed Preliminary Landscape Plan of East Side of ACE
Scale: 1" = 20'



Proposed Elevation View of Landscape Plan from above
Not to Scale

East Roswell Park - Proposed Elevation View @ Arts Center East

9000 Fouts Road - Roswell, Georgia 30076

January 2019



Phase I Parking Lot Tree Removal and Replacement Plan

Tree Removal and Planting Plan

Approximately 60 Trees total

31 Pines 6"-12" Diameter (dbh)

20 Pines 12"-16" Diameter (dbh)

9 Sweetgum 6"-10" Diameter (dbh)

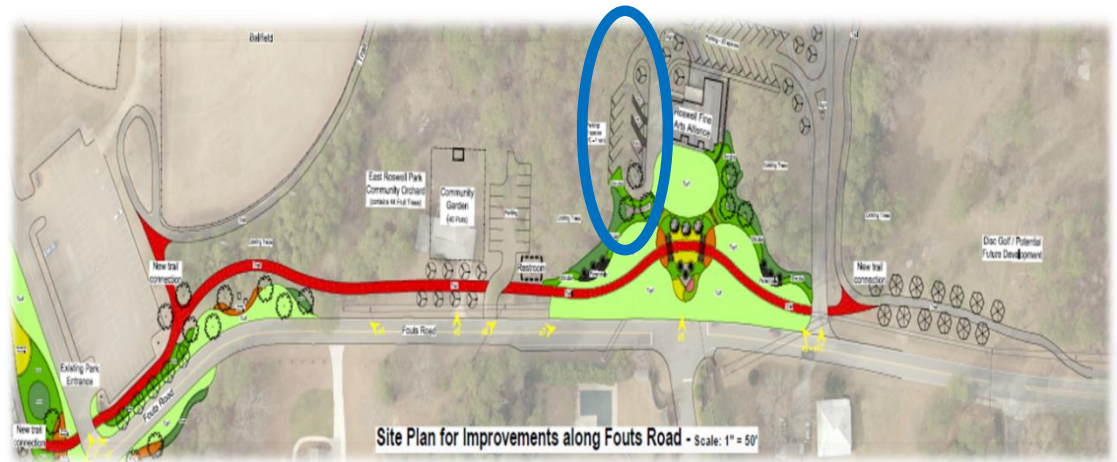
Repainting Plan

Approximately 20-30 Trees

Hardwood Tree mix: Maple, Oak,
River Birch and Bald Cypress.

Flowering tree mix to include:
Serviceberry, Flowering Dogwood
and Redbud

Evergreen tree mix to include:
Southern & Sweetbay Magnolia,
Holly, Ornamental Red Cedar



dbh: Diameter at Breast Height



Phase I Front Entrance Tree Removal and Replacement Plan

Tree Removal and Planting Plan

76 Total Trees

53 Pines 8"-20" Diameter (dbh)

17 SweetGum 6"-10" Diameter (dbh)

4 Black Cherry 6"-8" Diameter (dbh)

3 Red Maple 8"-12" Diameter (dbh)

1 Red Cedar 8" Diameter (dbh)

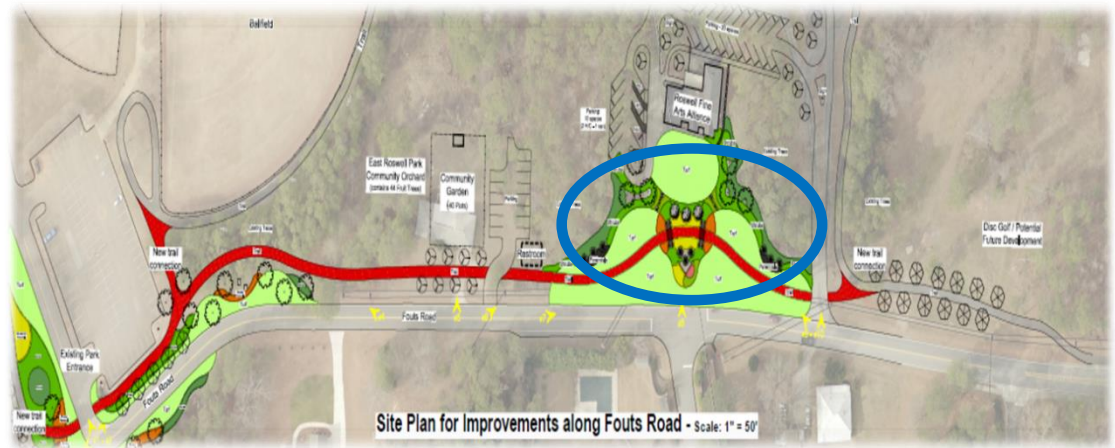
Repainting Plan

Mix of 30-40 Trees

Hardwood Tree mix: Maple, Oak, River Birch and Bald Cypress.

Flowering tree mix to include:
Serviceberry, Flowering Dogwood
and Redbud

Evergreen tree mix to include:
Southern & Sweetbay Magnolia,
Holly, Ornamental Red Cedar



dbh: Diameter at Breast Height



Public Outreach Plan

Completed public outreach

- Individual meetings with stakeholder groups
- Reviewed improvement goals and plans with Recreation Commission during a public meeting on November 16, 2018.

Next steps for public outreach

- Project review for City Council January 15, 2019
- Public project walk and informational meeting on January 26, 2019
 - Invitations to property owners within 500 feet of the project including the entire 12 Stones Community
 - Invitations through social media for general public
- Project initiation February 2019

