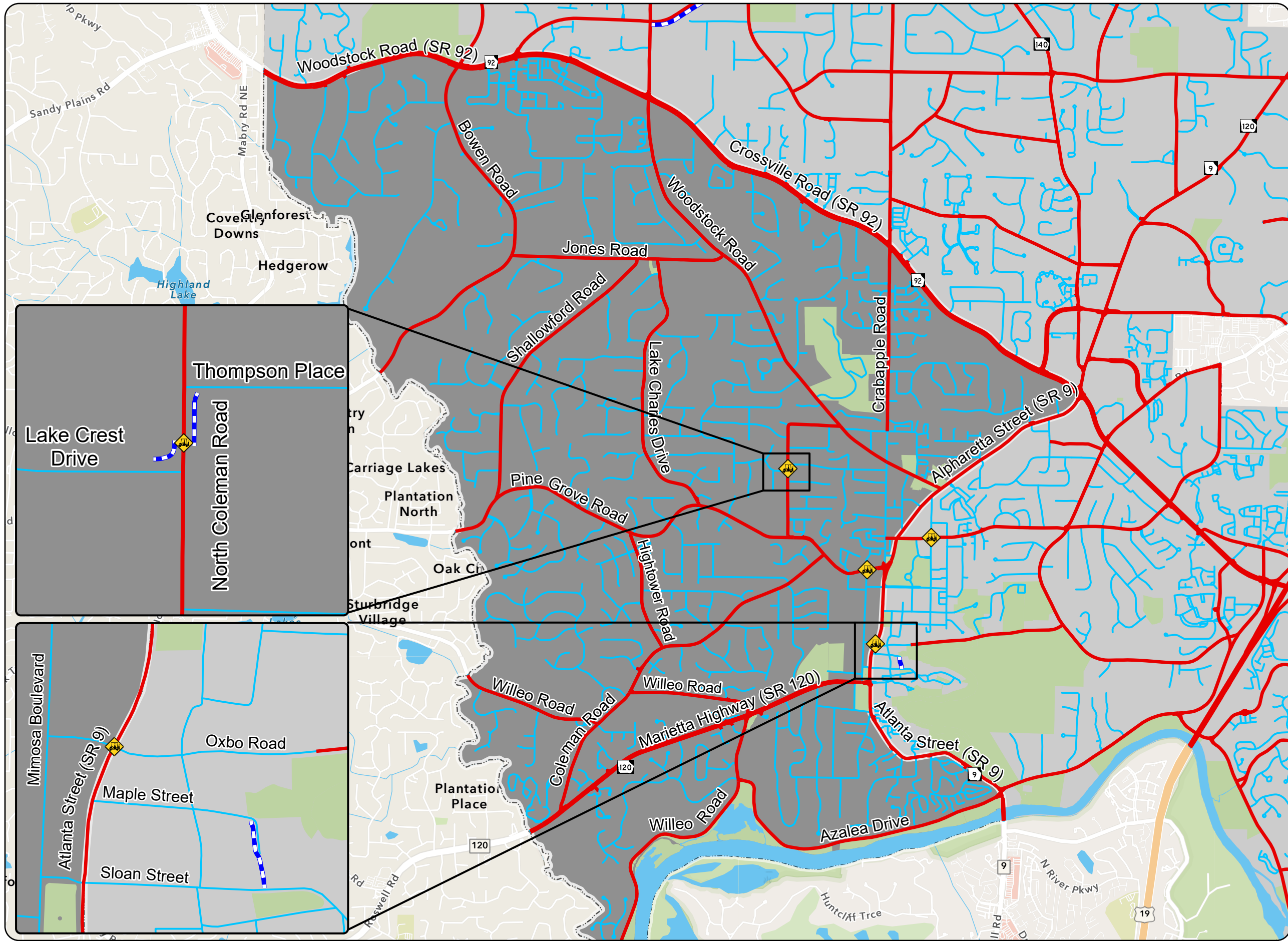


# PTV Designated Areas - Zone 3



## Legend

### Approved PTV Crossings

- Magnolia Street at Mimosa Boulevard
- Norcross Street at Fraser Street/Forrest Street
- North Coleman Road at Lake Crest Drive
- Atlanta Street (SR 9) at Oxbo Road

### Other PTV Approved Facilities

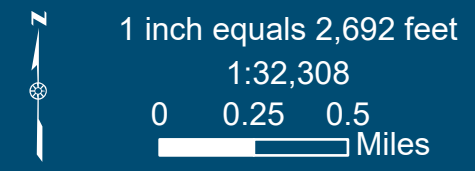
- Multi-Use Trails

### Streets

- PTV Use Prohibited
- PTV Use Permitted

### Roswell Parks

- National Parks Service
- Roswell City Parks



Created By: kmartin Created Date: 2/7/2024 Updated Date: 2/6/2024 4:54 PM  
 Document Path: M:\PLANNING DIVISION\GIS\Transportation\PTV\Zone Maps for Website\PTV Zone Maps\PTV\_Zone\_Maps.aprx  
 Sources: Roswell Department of Transportation (2024), City of Roswell GIS (2024), Esri Community Maps Contributors, Esri, HERE, Garmin, SafeGraph, GeoTechnologies, Inc, METI/NASA, USGS, EPA, NPS, US Census Bureau, USDA, Esri, HERE, Garmin, SafeGraph, GeoTechnologies, Inc, METI/NASA, USGS, EPA, NPS, USDA (2024)

The City of Roswell attempts to create, use, and maintain accurate spatial data. However, the City of Roswell does not warrant the accuracy or currency of the data contained herein. All data is provided "as is," with all faults, without warranty of any kind, either expressed or implied, including, but not limited to, the implied warranties of merchantability or fitness for a particular purpose.

