



The Roswell Police Department

2008-2009
Annual Report

ROSWELL POLICE DEPARTMENT

FY Annual Report

2008-09

CONTENTS

<u>letter from the chief</u>	<u>1</u>
<u>mayor and council</u>	<u>2</u>
<u>introduction</u>	<u>3</u>
<u>organizational chart</u>	<u>4</u>
<u>office of professional standards</u>	<u>5</u>
<u>support services division</u>	<u>7</u>
<u>field services division</u>	<u>9</u>
<u>crime analysis</u>	<u>13</u>
<u>budget summary</u>	<u>18</u>
<u>commendations & awards</u>	<u>19</u>



ROSWELL POLICE DEPARTMENT

Letter from the Chief

I am pleased to present the Roswell Police Department's FY 08-09 Annual Report. It contains important and interesting information about your police department.

The Roswell Police Department takes pride in the fine men and women who serve our community and risk their lives every day in order to preserve the safety and security of our citizens. Our goal is to drive down crime while continuing to police in a fair and constitutional manner.

It's no wonder that Roswell continues to be ranked as one of the safest cities in the United States. Our public education and awareness campaigns are among the finest, providing our citizens approximately 250 educational programs on current public safety issues. Programs provided through the Crime Prevention Unit include Law Enforcement Center tours, child seat safety, drinking and driving awareness, senior personal safety, identity theft, crime watch, shadow programs, finger printing demonstrations, Operation ID, Citizens Police Academy, Explorers, Georgia Child Identification Program and much more.

Some of our more notable accomplishments in 2008-09 include:

- The acquisition and training of our new K-9 unit, Bruno.
- Establishment of a full-time criminal intelligence office.
- Special Operations Section, tasked to deter street crimes and apprehend offenders in problem areas.
- Implemented on site medical services and expanded Detention Officer II program to redirect patrol officers from inmate medical transport to directed neighborhood patrol.
- Implementation of our Crime Free Multi-Housing Program with which the police department teams with apartment owners and managers to reduce crime, blight and disorder within the multi-housing communities.
- Launch of our Criminal Intelligence Website used by officers as a clearinghouse for information on current and anticipated criminal activity.
- Implementation of Crime Prevention Through Environmental Design (CPTED) beginning with communities participating in our Crime Free Multi-Housing Program.
- Illegal Immigration Enforcement – Even though Roswell is unable to participate in certain Immigration enforcement programs such as 287(g), the Roswell Detention Center has continued to report every foreign national arrested to the Immigration and Customs Enforcement agency.

In our continued effort to stay progressive, change with our community, and continue to provide the Citizens of Roswell with the "safest city", we are developing the following expanded programs in 2010:

- Plans are already underway to contract with new state-of-the art and privately owned indoor firing range that will enable our officers and S.W.A.T. team's proficiency training and year-round simulated exercises.
- Implementation of an employee fitness program to keep our employees at peak performance.
- Work with other North Fulton Public Safety Agencies to up-grade our radio communications system.

In summary, we endeavor to respond to the changing needs of our community while keeping on top of the latest trends, information, and resources available to the law enforcement community.

Sincerely,



Mayor and Council

FY Annual Report
2008-09



Mayor Jere Wood



Rich Dippolito



Becky Winn



David Tolleson



Kent Igleheart



Jerry Orlans



Lori Henry

Introduction

FY Annual Report 2008-09

The Roswell Police Department is charged with serving and protecting the citizens and visitors within the incorporated limits of Roswell, Georgia, a city located fifteen miles north of Atlanta. The 200 employee Department provides police services to a population of approximately 101,851 residents and 41.95 square miles of property.

The Atlanta Regional Commission population projections showed Roswell's population reaching 92,830 by 2012 and 102,149 by 2020. We have already surpassed the 2012 projection.

Meeting the challenges of a growing city, the **Roswell Police Department touts a Crime Rate of only 2 persons crimes and 25 property crimes per 1,000 persons .**

As the City has grown, so has the Department. The Department further expanded its services and added personnel in FY 2008-09.

Roswell residents and businesses are consistently active in the community and support police efforts to maintain a safe environment.

The citizens can expect and are afforded a professional, internationally accredited police department. The Roswell Police Department strives to set a standard of excellence for others to follow.

To achieve this goal, the mission statement reflects the fundamental principles of the organization and should be the cornerstone of each and every member of the Roswell Police Department's policing philosophy.

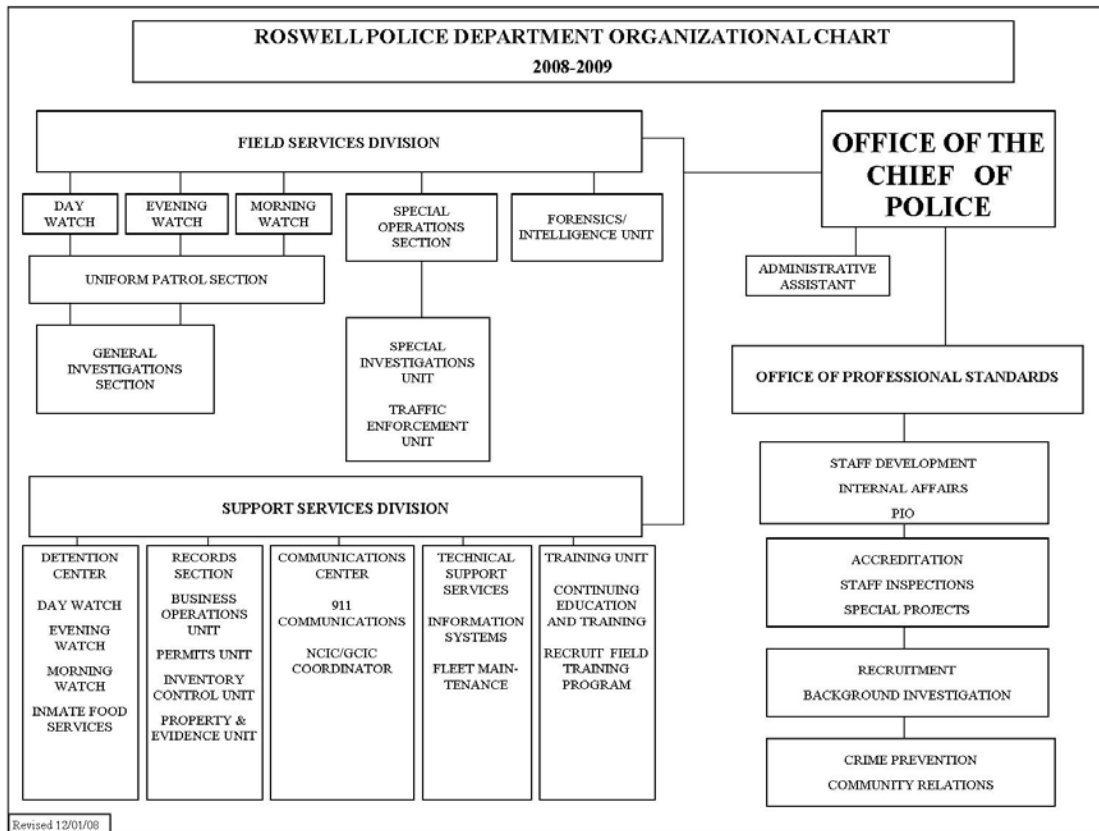


Internationally Accredited since 1995

"The Roswell Police Department protects life and property, preserves the peace, and strives to prevent crime and disorder in the City of Roswell. on behalf of all who live, work, and travel through our city."

FY Annual Report
2008-09

Organizational Chart



Office of Professional Standards

FY Annual Report 2008-09

The office of Professional Standards, (OPS) under the direction of Lieutenant James McGee, is responsible for Internal Affairs, Media Relations, Recruitment and Research Planning and Management, which includes accreditation and special projects. OPS is also over Public Affairs which includes the Community Relations / Crime Prevention Unit. The mission of this office is to ensure the integrity of the Department and its personnel through impartial investigation and developmental management support.

Internal Affairs

The **Internal Affairs Unit** performs internal investigations resulting from complaints and allegations of misconduct brought against department members and City of Roswell employees.



PIO Lieutenant James McGee

Recruitment

Recruitment and selection is an intense process involving background investigations, medical and psychological screening, and polygraph examinations. This process is to ensure the integrity and fitness of all persons to be employed and vested with the public's trust.



Fitness testing for recruits

Media Relations

The Department's lead Public Information Officer (PIO), Lieutenant James McGee provided the media, including television, radio, and print sources, with regular and up to date information on all aspects of the activities of the Police Department. In particular the PIO is responsible for disseminating status reports and look-outs for on-going investigations and for providing news releases at the conclusion of major cases providing data on persons arrested for these crimes.

Office of Professional Standards

Accreditation / Certification

The Research, Planning, and Management Unit of the Office of Professional Standards (OPS) maintains documentation as proof of compliance to Department policies and procedures based on professional law enforcement standards established by the Commission on Accreditation for Law Enforcement Agencies (CALEA) and the Georgia Association of Chiefs of Police. Several new standards were established by CALEA requiring the Unit to direct the institution of new policies and procedures. The police department has maintained the distinction of accreditation since 1995. In addition, the department was awarded Georgia State Certification in 2005. Through these programs the Department continues to demonstrate a dedication to professionalism for the citizens of Roswell. In 2008 the Unit was moved to OPS under the leadership of Lieutenant James McGee who was assigned the duties of Accreditation Manager. Detective Joel Montezinos, who is certified as an Assessor for CALEA and an Assessor and Team Leader for State Certification remained with the Unit.

In April of 2009 the Department underwent an on-site assessment by a team of assessors from CALEA. The team was comprised of three experienced ranking law enforcement officials from accredited agencies in different states. The evaluation lasted four days and consisted of documentation review, interviews, and observation of Department activities. The assessment resulted in a recommendation to the CALEA Commissioners to reaccredit the department for another three years.

During the year Detective Montezinos conducted assessments as an Assessor and Team Leader for law enforcement agencies in the United States and Mexico. The Department and City has benefited greatly from the experience garnered from assessing other law enforcement agencies.

Community Affairs

The **Community Relations/Crime Prevention Unit** provides positive interaction between the Department and the community. Education in crime prevention is also the responsibility of this Unit. In FY 2008-09, Crime Prevention Specialist Lawanda Kornegay along with officers in the Department, conducted approximately 327 educational classes, organized 29 Neighborhood Watch training programs, coordinated their annual National Night Out Event and coordinated 30 "ride-alongs" with officers. This unit also coordinated the department's 19th Citizens Police Academy and produced the department's annual report.

This Unit conducted 122 child restraint seat inspections, along with class instruction to groups on child restraint safety. In addition, the Unit conducted 27 tours of the Law Enforcement Center. The Crime Prevention Specialist also instructed regular classes for Roswell's 4th annual "Safety Town" and taught at two Boy Scout merit badge clinics.

These, and other numerous activities, demonstrate the Unit's commitment to the Department's community oriented policing efforts.

Various topics on crime prevention can be found on the City's website, www.roswellgov.com, under the Police Department section.



National Night Out 2009

Support Services Division

FY Annual Report 2008-09

The Support Services Division, under the direction of Major John Watson, is responsible for providing logistical support and guidance to the operating functions of the police department. Services provided by this Division include Detention Center Operations, E911 Communications, Records and Identification, Inventory Control, Information Systems and Business Operations.

Support Services Programs

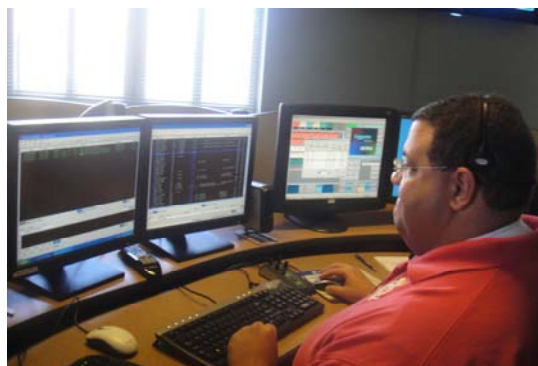
Business Operations Provides support in developing department annual operating and capital budgets and monitoring expenditures during the year and coordinates with City Finance Department to provide asset control.

The Records Section receives, maintains and distributes records of Police activity within the department. Staffed by five Records Clerks, this section responds to all open records requests including accident and incident reports and any request for documentation relating to Police activity. Accident reports can be viewed on line at: <http://roswellga.policereports.us/>.

Inventory Control A Quartermaster manages a warehouse stock of operating supplies and uniform components for the department. Responsibilities include ordering, receiving, inventorying and issuing uniforms. The quartermaster also works with the City's Accounts Payable and Purchasing departments to coordinate requisitioning and payment activities for non-stock items.

Administrative Support Five Administrative Specialists provide support to the Department and to all who visit or call the Department. They maintain, distribute and create forms, files, reports, and perform secretarial services as well as assisting and directing public requests for information and service.

The **Communications Center** provides dispatch and E911 services for the cities of Roswell and Mountain Park, to include police, and fire / rescue services. Eighteen communications officers work three shifts, supervised by an E911 manager. Dispatchers are Emergency Medical Dispatch, CPR, GCIC and POST certified. All 911 dispatchers have also completed the National Incident Management Training through FEMA. The Communications Center routinely has four dispatchers per shift, monitoring nine radio frequencies, with capabilities to monitor over 80 more when necessary. In addition, the dispatchers are responsible for ten E911 phone lines and over forty emergency and non-emergency phone lines. Calls for service are entered into the Computer Aided Dispatch (CAD) system and information is maintained on the IBM AS/400 mainframe.



Communications Officer Chad Jenkins
working E911 Center

Support Services Division

The **Information Systems Section** provides help desk and hardware support to maintain the integrity of data and systems. This includes Computer Aided Dispatch (E911), 130 Field Reporting Tough Book laptops in service, the Crimes and Jail databases on the AS400 mainframe, as well as desktop applications.

Crime Analysis A Crime Analyst is responsible for analyzing data to identify patterns in criminal activity to facilitate directed patrol. The Crime Analyst also provides statistical and UCR reporting for the department and the GCIC.

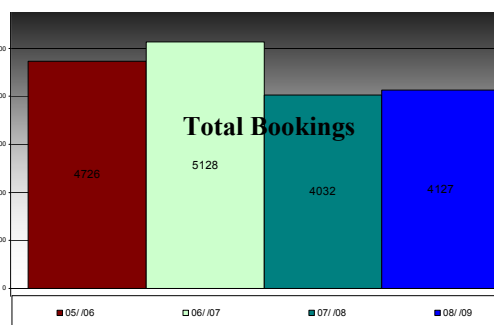
Permits provides enforcement of select business licensing ordinances by reviewing applications, collecting fees and issuing permits for liquor pouring and handling, massage therapy, vehicles for hire and public solicitation licenses. They also provide fingerprinting service to the public.

Detention Center

The Detention Center houses persons sentenced by the City of Roswell Municipal Court. The Center has three shift supervisors and requires a staff of twenty-six detention officers.

The Detention Center houses misdemeanants and felons awaiting trial.

In 2008-09 there were 4127 total bookings for the year.



The Detention Center offers church services in English and Spanish on Sundays and Bible Study on every Tuesday. AA meetings are offered weekly on Mondays. The Center has a library offering books in several languages, including religious and educational material. A full-time cook prepares three well-balanced meals based on a menu designed by a state licensed dietician.

Evidence Room

The evidence/property technician is responsible for receiving and handling all evidence and property. The technician is also responsible for ensuring that paperwork for all items is correctly submitted and logged into the computer database by case number and location.

The evidence technician also transports evidence to the GBI lab for processing and testifies in court to the chain of custody of evidence. The evidence function has dealt with over 5,000 pieces of evidence on average for the past two years. It is also the responsibility of the evidence/property technician to follow up with officers and detectives to keep abreast of the status of the cases in which the Department holds evidence. This way, upon adjudication, items may be returned to the owner, destroyed, or auctioned.



Det. Ken Kraus, Crime Scene Tech and Evidence Room Technician Tara Stonecypher

FY Annual Report 2008-09

Field Services Division

The Field Services Division, under the command of Major C. M. Brown, is responsible for Uniform Patrol, Traffic Enforcement, DUI Enforcement, Criminal Investigations, Crime Suppression, Special Investigations and Fleet Maintenance. The mission of this Division is the preservation of life and property; to preserve the peace; to prevent crime and disorder; to enforce state laws and local ordinances; and to provide public service to the Roswell community. To meet these responsibilities, 78 uniform patrol officers, 21 detectives and 19 supervisors work three shifts, providing coverage 24-hours-a-day, seven-days a week, in cooperation with the other divisions.

Uniform Patrol

Day Watch patrols the City from 7:00 a.m. to 3:00 p.m. with 34 officers. A captain, two lieutenants and four sergeants supervise the officers who respond to situations which occur as the day begins for the community. The types of calls can be traffic related, criminal incidents such as armed robbery and burglary, alarms, vacation premises checks and domestic crisis intervention.

Special efforts were continued to address loitering in the Alpharetta Highway area and issues surrounding day laborers. Day watch officers are often seen patrolling residential neighborhoods creating a police presence when most residents are away from home.

Evening Watch operates with 29 officers. A captain, lieutenant and four sergeants supervise this shift that provides services from 3:00 p.m. to 11:00 p.m.

These officers respond to calls similar to those received in Day Watch, however, many of the government and private agencies that serve as a resource are operating on an as-needed basis during most of this shift. This shift receives a high volume of calls for service.

Morning Watch patrols the City with 19 officers from 11:00 p.m. to 7:00 a.m. when most businesses are closed. A captain, lieutenant and three sergeants supervise. Officers respond to routine calls for service, as well as concentrating on patrolling businesses to detect and apprehend those involved in criminal activity. Emphasis is placed on traffic contacts since people who commit criminal acts often drive to and from the crime location during these hours. These contacts often yield information pertinent to the investigation of criminal activity.



Officers working a Police and Fire Show 2008

The **Bicycle Patrol** is made up of officers assigned to patrol duties full time and Bike Patrol when needed. They keep their police bicycle skills sharp as they may go into service on bicycles with short notice. They mainly work special events where crowds make patrolling on vehicles difficult.

Field Services Division



Traffic Enforcement Unit

The Traffic Enforcement Unit (TEU) is responsible for the enforcement of the State's traffic codes. The focus of the unit is traffic violations and the apprehension of DUI drivers. The expectation is that speed reduction and the removal of drivers under the influence from the road will result in fewer accidents with less personal injury and property damage. TEU officers investigate all accidents resulting in fatalities or serious injuries and those involving city vehicles. All officers receive advanced training in the technical aspects of accident investigation. Because of their expertise, many of the TEU officers conduct training in traffic accident reconstruction in state and local law enforcement academies. A TEU officer is assigned to investigate all hit-and-run accidents. These are accidents in which a driver left the scene without stopping or reporting the accident to the police.

The Crime Suppression Unit

The Crime Suppression Unit is an intelligence and investigative support unit responsible for identifying and addressing criminal activity within the City. Lead by a sergeant, officers, including K-9 and gang investigators, investigate criminal activity by both overt and covert means. This street-level Unit has the ability to address gang activity one day, drug enforcement the next and then switch to the enforcement of City codes. Flexibility is the key to this specialized unit.



Det. Greg Cooper works the K-9 Unit

Special Operations Unit

This part-time unit of four SWAT teams, under the command of Captain Donald Moss, represents personnel from all divisions. These officers respond to high risk calls needing special skills and equipment. The unit undergoes intense specialized training and members are called out to perform this function in addition to their normal responsibilities.

Field Services Division

School Crossing Guards

Under the command of a traffic sergeant, crossing guards are provided to local schools to assist with safe and orderly pedestrian flow. Within the City of Roswell, there are various public schools that have heavy pedestrian traffic. The Department recognizes the needs of pedestrian traffic, especially when the walkers are children. School crossing guards are fully trained in laws and procedures in directing critical school pedestrian traffic.

Criminal Investigation

The **General Investigations Section** (GIS) investigates major crimes against persons, property and juvenile related cases, and processes crime scenes. The **Special Investigations Section** (SIS) investigates organized criminal activity such as drug trafficking and vice. Both sections provide surveillance, intelligence gathering and technical equipment support for the entire Department. Criminal Investigations is committed to Community Oriented Policing. Detectives routinely speak to citizen groups, schools, civic groups and businesses advising of recent crime trends and points of awareness. Roswell Investigators continue to actively participate in the "North Metro Atlanta Intelligence Group" sharing information. Investigators from Roswell, Alpharetta, Fulton County School Police, Forsyth and Cherokee Counties meet to discuss crime trends and share intelligence information.

The **General Investigation Section** operates on two shifts, each shift commanded by a captain, a lieutenant and sergeant. Responsibilities on each shift are divided into two units:

The **Crimes Against Persons Unit** is responsible for investigating deaths, robberies, rapes, aggravated assaults and crimes against children, missing persons, juvenile runaways,

and general crimes of violence. A dedicated juvenile crimes investigator is assigned to this unit. This investigator is specifically trained and available to juvenile related crimes.

The **Crimes Against Property Unit** is responsible for investigating crimes such as burglary, auto theft, fraud, general thefts, and computer crimes. Two investigators are assigned specifically to "White Collar Crimes" which encompasses internet related fraud, money laundering, mortgage fraud and crimes involving computers. Both of these investigators are also active members of the United States Secret Service White Collar Crime Task Force in Atlanta. This unit budgeted and procured much needed forensic computer investigation software that allows trained investigators to secure computer data as evidence of crimes. A temporary duty assignment of a detective to the Federal Bureau of Investigation (FBI) Innocent Images Task Force, is assigned to investigate crimes against children via the Internet. This position investigates child sexual exploitation and child pornography manufacturer and distribution and assists the Department with additional resources and training, helping to protect children.



Detectives Roger Marbut and Danny Redmon work crimes against persons.

Field Services Division

Special Investigations Section (S.I.S.)

This Section consists of five investigators. Four investigators are assigned to Atlanta Intensity Drug Trafficking Area (HIDTA) and are working in two separate investigative groups within that unit. The fifth investigator is assigned to the Drug Enforcement Agency (DEA) Atlanta Field Division Task Force.

S.I.S. participates in the continued sharing of intelligence information with other agencies. Officers assigned to S.I.S. also participate in the North Fulton Intelligence network. They provide information on suspects who were engaged in many criminal activities in addition to drug trafficking. S.I.S. has conducted briefings to the group, informing them of Atlanta HIDTA's training opportunities, intelligence gathering, and analysis capabilities. S.I.S. participation in Atlanta HIDTA has allowed the department to access intelligence information from nationwide sources that otherwise would have been unavailable. HIDTA investigators are cross designated as Drug Enforcement Administration Task Force Officers and as such, have Federal authority to enforce United States drug laws and have on-line access to DEA information and intelligence systems. S.I.S. has shared and received valuable information from officers in Uniform Patrol that has made the operation of both units safer and more effective.

Our participation in Atlanta HIDTA has given us priority availability for classes provided by HIDTA. In addition, we have been able to attend training on the Federal level that would have been otherwise unavailable. We have two Investigators certified in investigation of clandestine labs. A major drug and health issue especially for methamphetamine production.

The Honor Guard and Color Guard

This unit began in 1996 and has progressively increased its membership. Members have participated in numerous special events for the community and are best recognized for their honored contribution to the Roswell Memorial Day Observance at the Roswell Vietnam Faces of War Monument. The members of this unit schedule regular practice meetings in order to hone their skills and present a professional and uniform appearance.



The Roswell Law Enforcement Explorers Program Post 10

This program began in February 1995. It is a coed program organized in cooperation with the Boy Scouts of America. The Program is for young adults, ages 14 through 20, interested in pursuing a career in law enforcement or understanding the role of police. Members must maintain at least a "C" average in school.

Explorer activities included the Adopt-A-Road program, assisting in the Recreation and Parks Department's Easter Egg Hunt, Memorial Day festivities at Roswell City Hall and the Fourth of July fireworks extravaganza.

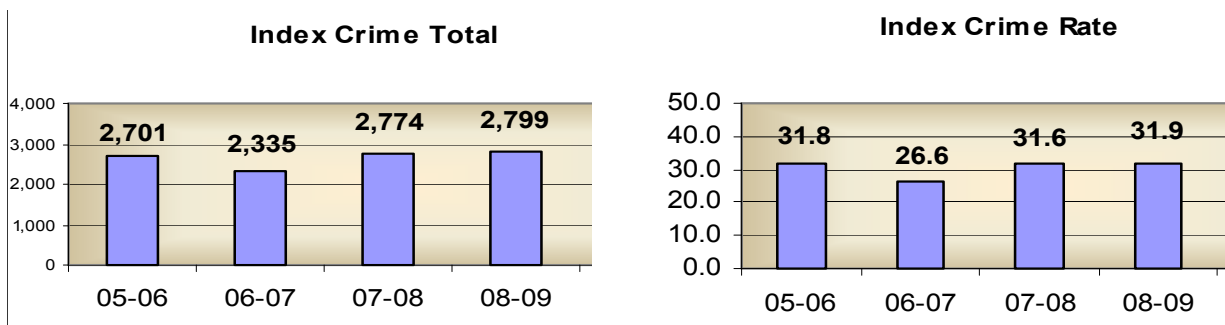
Some of the training received by Explorers include rappelling, emergency vehicle operations, high risk stops, crime scene investigation, defensive tactics, domestic disputes, and criminal and constitutional law. They get to show off their learned skills in national competitions and regional completions. In February 2009 they, and 179 other Explorer posts, attended Winterfest, the largest Explorer competition in the country. Due to their past expertise they hosted the Escaped Inmate Event. They are scheduled to compete at several regional events this year.

Crime Analysis

Crime statistics are compiled to track and prevent criminal activity in the City of Roswell. The FBI has designated certain crimes, because of their frequency and severity, as Index Crimes. These crimes are: murder, rape, robbery, aggravated assault, burglary, theft, motor vehicle theft and arson. The first chart shows the number of index crimes reported to the police; the second chart shows the Index Crime Rate which is calculated per 1,000 residents and provides a measure for comparing jurisdictions

***The numbers in this report reflect our fiscal year July 08-June 09; statistics reported to the FBI are based on calendar year.**

Department personnel utilize statistical analyses to aid in identifying trends, similarities, and possible perpetrators. Statistics also aid in determining timely and appropriate actions to deter criminal activities so as to maintain the quality of life enjoyed by the citizens of Roswell. These analyses are available to the public. This allows individuals and community groups to keep abreast of any criminal activity occurring in their neighborhoods and businesses. These statistics also allow those individuals considering relocation to Roswell to make well-informed decisions with regards to crime.

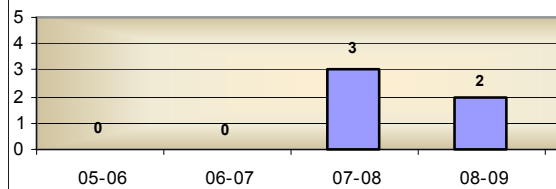


Crime Analysis

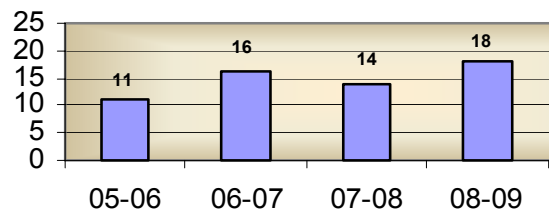
Index Crime Breakdown

Violent Crimes

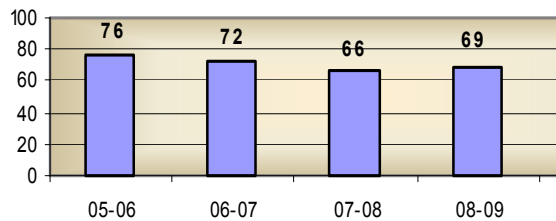
Homicide - the willful killing of one human being by another.



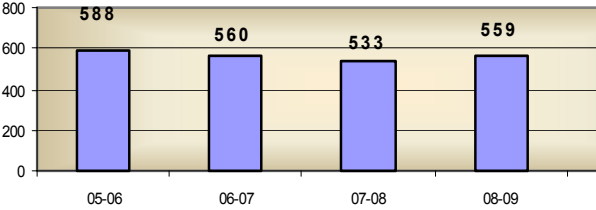
Rape - this category includes Rape by Force and Attempted Rape by Force reports.



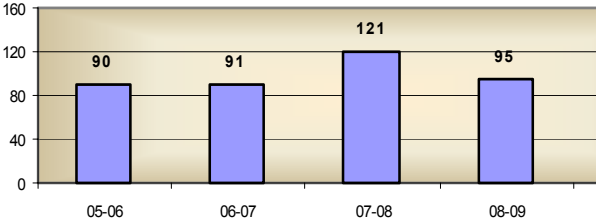
Aggravated Assaults - an unlawful attack by one person on another.



Crime Analysis



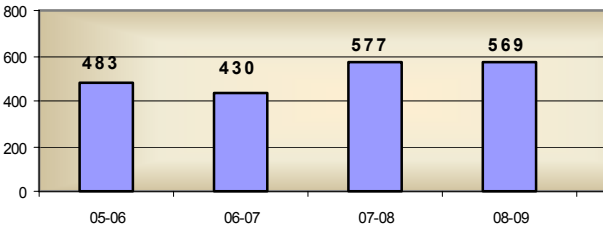
Simple Assault - do not involve a firearm, cutting instrument, or other dangerous weapon and in which there were no serious or aggravated injuries to the victims.



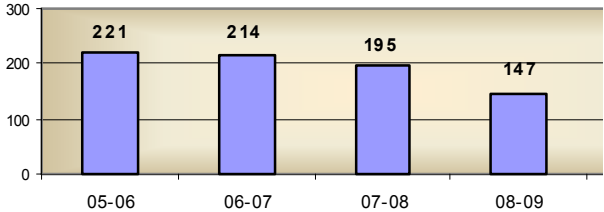
Robbery - the taking or attempting to take anything of value from the care, custody, or control of a person by force or threat of force or violence and/or by putting the victim in fear.

Crime Analysis

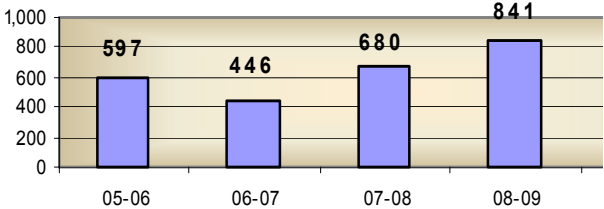
Burglary - the unlawful entry of a structure to commit a felony or a theft.



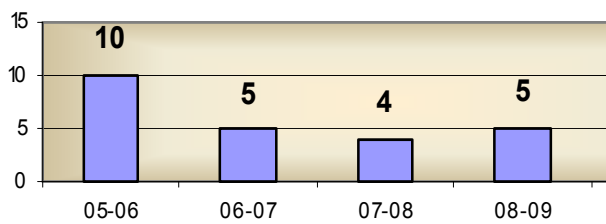
Motor Vehicle Theft - the theft or attempted theft of a motor vehicle.



Entering Auto - the theft of articles from a motor vehicle, whether locked or unlocked.

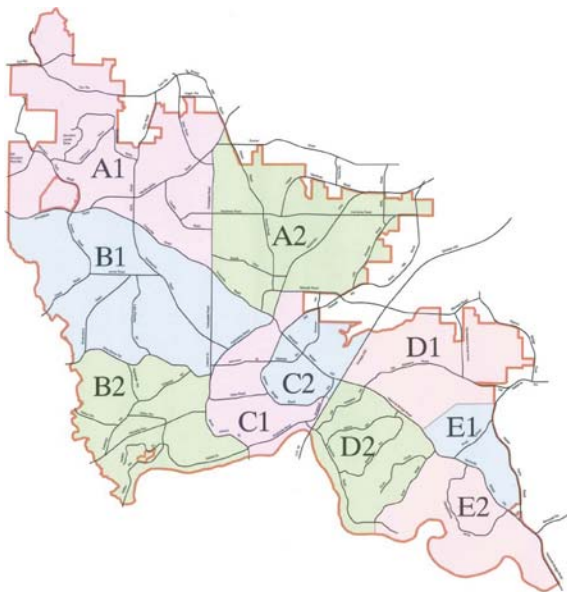


Crime Analysis



Arson - any willful or malicious burning or attempt to burn, with or without intent to defraud, a dwelling, house, public building, motor vehicle or aircraft, personal property of another, etc.

Roswell Police Patrol Zones



Areas of Crime Activity

2008-09 was the eleventh full year that the Roswell Police Department had ten patrol zones, thus providing more meaningful statistical analysis for comparison. The Alpha and Charlie zones had more reported activity than the other zones. Alpha 2 contains several auto dealerships and other businesses located along Alpharetta Highway (Highway 9). Charlie 1 encompasses the Roswell Police Department Law Enforcement Center where many reports are filed by the public. When these reports are filed, the Department's address is used. This negatively impacts Charlie 1 zone.

Budget Summary

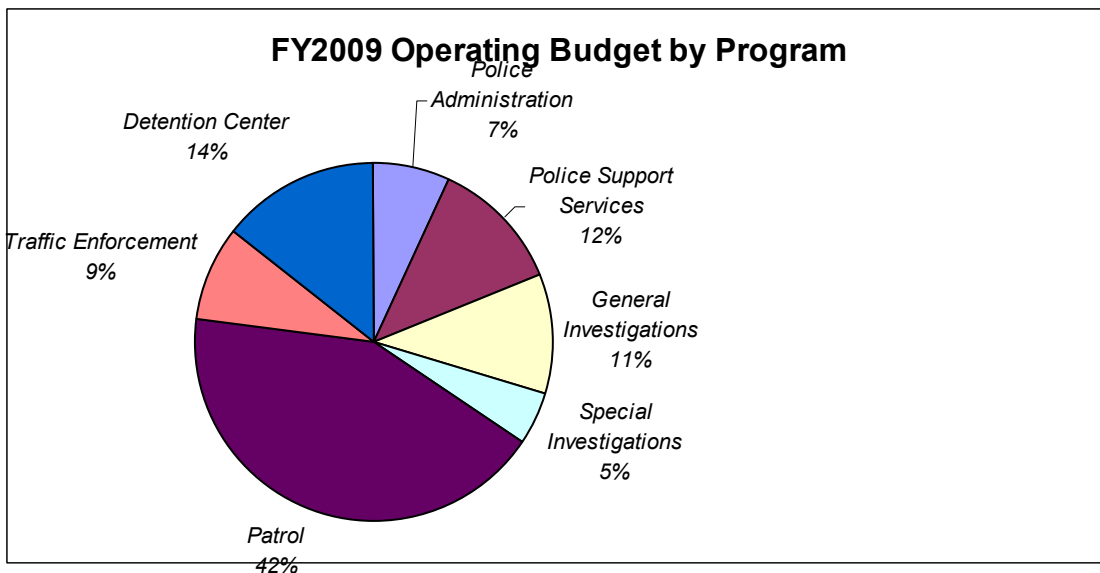
FY Annual Report 2008-09

Budget Highlights FY 2008

The Operating Budget for the Police Department for the fiscal year 2008-2009 was \$19,138,602. This includes General Fund, E911 Fund and Confiscated Assets Fund. There are 209 funded full time positions in the department. This budget challenges us to meet our community oriented policing goals in a volatile environment including increasing cost of gasoline and other commodities and decreasing sales tax revenue.

The approved expenditure budget for Fiscal Year 2009 was \$ 19,138, 602

General Fund:	\$16,340,809
E-911 Fund	2,055,574
Confiscated Assets Fund	192,119
Capital Projects Fund	550,100
TOTAL ALL FUNDS	\$19,138,602



FY Annual Report
2008-09

**Commendations
 & Awards**

Officers and civilian personnel receive commendations for professionalism, assistance given and/or courtesy to citizens or fellow employees.

Alexander, Tim	1	Larkins, Michael	1
Anglin, James	1	Lathem, John	1
Battle, Richard	1	Macdonald, Mark	2
Bennett, Jennifer	1	Marbut, Roger	1
Bergmoser, Stemphen	1	Mariani, Jose	1
Blake, Childress	1	Matthews, Michael	1
Bradley, Kimberly	1	McGee, James	1
Browning, Silvia	2	Najar, Ellanda	1
Bryant, Stanley	1	Ninon, April	1
Coombs, Linnea	1	Orrick, Russell	1
Darlow, Kandi	1	Payne, Jeffrey	1
DeWeese, Dana	1	Petty, Jerry	1
Desrosiers, Ted	1	Pitts, James	1
Dixon, Eric	1	Ratliff, Kyle	2
Freeman, Matt	1	Reach, Andy	1
Frommer, Zachary	1	Redmond, Danny	1
Fryson, Greg	1	Robinson, Kesa	2
Garcia, Tomas	1	Rodgers, Nicole	2
Harris, Chad	1	Rooker, Cindy	1
Hohler, Tom	2	Sewell, Lynn	1
Holland, Bernie	1	Smith, Kevin	1
Holland, Lisa	3	Stancil, Tammy	1
Hood, William	1	Stephens, Jeremiah	1
Johnson, Gary	1	Tucker, Skip	1
Kornegay, Lawanda	3	Wilson, Frank	1

Awards

FY Annual Report 2008-09



Police Officer of the Year 2008
MPO Sgt. Andy Reach



Field Services Supervisor of the
Year 2008 Sgt. Kevin Smith

Detention Officer of the Year 2008
Thomas Robinson
Unavailable for photo