



The Roswell Police Department

Fiscal Year 2007-2008
Annual Report

This page blank

CONTENTS

FY Annual Report 2007-08

<u>letter from the chief</u>	<u>2</u>
<u>mayor and council</u>	<u>3</u>
<u>special dedication</u>	<u>4</u>
<u>introduction</u>	<u>5</u>
<u>organizational chart</u>	<u>6</u>
<u>office of professional standards</u>	<u>7</u>
<u>research, planning, and management</u>	<u>8</u>
<u>support services division</u>	<u>11</u>
<u>field services division</u>	<u>14</u>
<u>crime analysis stats</u>	<u>19</u>
<u>budget comparisons</u>	<u>24</u>
<u>commendations</u>	<u>25</u>
<u>awards</u>	<u>26</u>



ROSWELL POLICE DEPARTMENT

Mayor and Council

FY Annual Report 2007-08



Mayor Jere Wood



Councilman Rich Dippolito
Post 1



Councilwoman Becky Winn
Post 2



Councilman David Tolleson
Post 3



Councilman Kent Igleheart
Post 4



Councilman Jerry Orlans
Post 5



Councilwoman Lori Henry
Post 6

FY Annual Report
2007-08

Special Dedication



With great sadness the Department witnessed the medical retirement and passing of Canine Officer Jerry Lee. Jerry Lee, with his K-9 Team partner MPO April Moody, began serving the citizens of Roswell in 1998 as the Department's first official canine officer.

He served in a dual capacity locating secreted narcotics and as a tracking dog mainly to locate suspects who had fled on foot. In his nine year career he prolifically located narcotics secreted in vehicles, homes, businesses, mail packages, and on individuals. He also assisted greatly in the Department's community relations efforts by providing countless demonstrations and presentations particularly for our school-aged children. Those of us who had the opportunity to see Jerry Lee in action often commented on how he loved his work.

Jerry Lee was more than just a fellow officer. He was also a friend who was always happy to share his toys and get a loving pet or scratch from his co-workers. In 2007 Jerry Lee was injured and forced out of service. Injuries and illness prevented his return to full-time duty and in March of 2008 he succumbed to his illness and passed on.

In special recognition, this Annual Report is dedicated to the memory of Canine Officer Jerry Lee. He is sorely missed and will never be forgotten.



Introduction

FY Annual Report 2007-08

The Roswell Police Department is charged with serving and protecting the citizens and visitors within the incorporated limits of Roswell, Georgia, a city located fifteen miles north of Atlanta. The 200 employee Department provides police services to a population of approximately 89,000 residents and 41.95 square miles of property.

The Atlanta Regional Commission population projections show Roswell's population reaching 92,830 by 2012 and 102,149 by 2020.

Meeting the challenges of a growing city, the **Roswell Police Department touts a Crime Rate of only 2 persons crimes and 25 property crimes per 1,000 persons .**

As the City has grown, so has the Department. The Department further expanded its services and added personnel in FY 2007-08.

Roswell residents and businesses are consistently active in the community and support police efforts to maintain a safe environment.

The citizens can expect and are afforded a professional, internationally accredited police department. The Roswell Police Department strives to set a standard of excellence for others to follow.

To achieve this goal, the mission statement reflects the fundamental principles of the organization and should be the cornerstone of each and every member of the Roswell Police Department's policing philosophy.

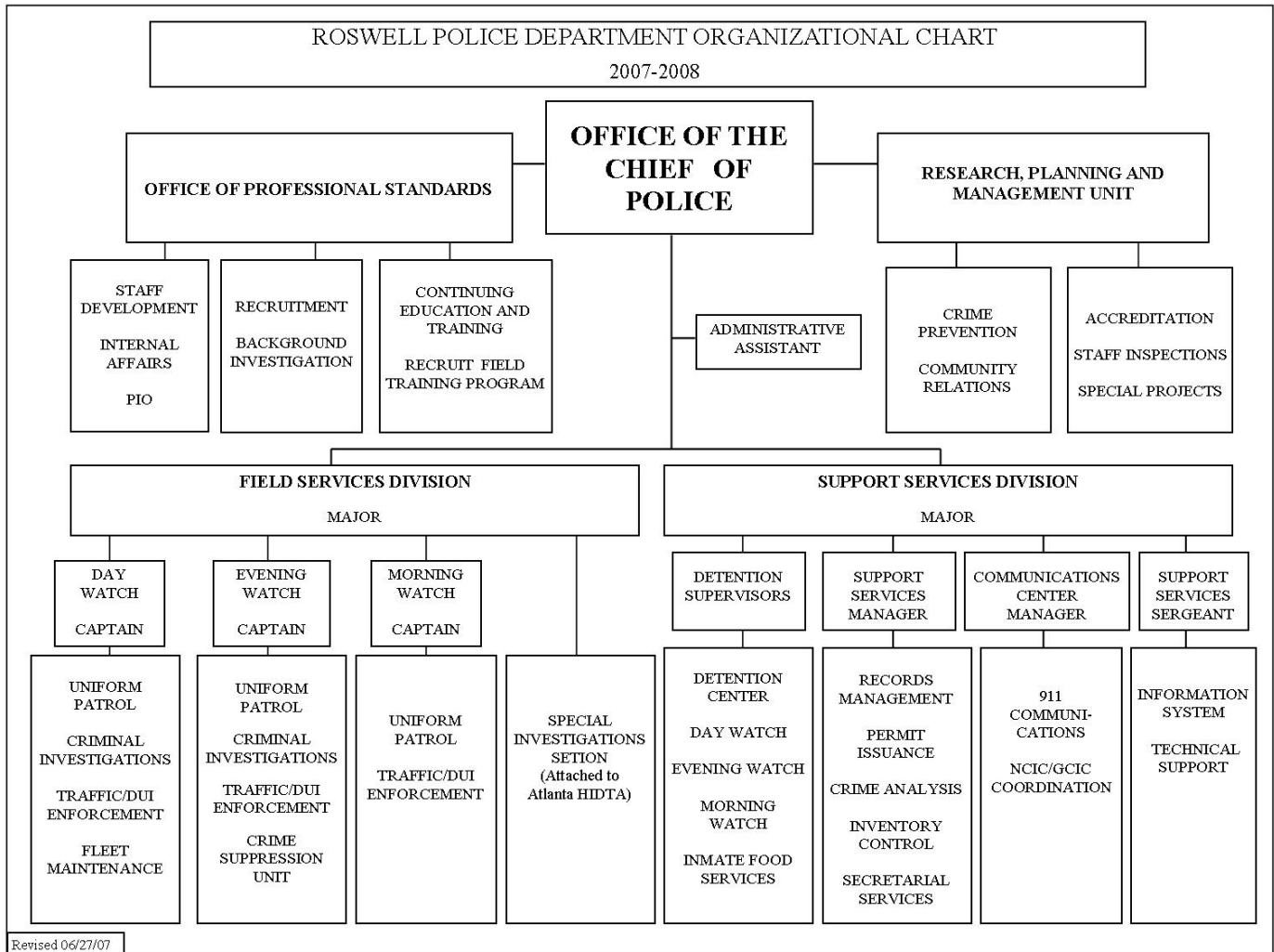


Internationally Accredited since 1995

"The Roswell Police Department protects life and property, preserves the peace, and strives to prevent crime and disorder in the City of Roswell. on behalf of all who live, work, and travel through our city."

FY Annual Report
2007-08

Organizational Chart



Office of Professional Standards

FY Annual Report
2007-08

The office of Professional Standards, under the direction of Lieutenant James McGee, is responsible for Internal Affairs, Media Relations, Staff Development, training, and Recruitment. The mission of this office is to ensure the integrity of the Department and its personnel through impartial investigation and developmental management support. This Office reports directly to the Chief of Police.

Internal Affairs

The **Internal Affairs Unit** performs internal investigations resulting from complaints and allegations of misconduct brought against department members and City of Roswell employees. There were a total of 82 complaints resulting in formal and inquiry investigations in 2007. Complaints were classified and investigated in the following manner: 80 Inquiries and 2 Formal Investigations. The dispositional breakdown is as follows: of the 2 Formal complaints, both were sustained,. Of the 88 Inquiries: 25 were sustained, 18 exonerated, 28 unfounded, 9 not sustained.

**These stats reflect a calendar year rather than a fiscal year for 2007.*

Media Relations

The Department's lead Public Information Officer (PIO), Lieutenant James McGee provided the media, including television, radio, and print sources, with regular and up to date information on all aspects of the activities of the Police Department. In particular the PIO is responsible for disseminating status reports and look-outs for on-going investigations and for providing news releases at the conclusion of major cases providing data on persons arrested for these crimes. Lt. McGee is supported in this role by PIO Sergeant Bobby Brackett and PIO Sergeant Frances Watson.

Training, Staff Development and Recruitment

The training and career development program is an integral part of the Department's strategic plan. Its function is an investment in our employees and beneficial to both the Department and the citizens we serve. The Department promoted 7 officers through the career development program. The Training Section manages and directs the educational requirements and coordination of training classes for all department personnel. The Roswell-Alpharetta Public Safety Training Center (RAPSTC) has an excellent reputation. Courses conducted are available to personnel from all local, state and federal agencies. Training requirements for recruits are carefully monitored to ensure these officers receive the necessary training in accordance with the Peace Officers Standards and Training Council (POST) requirements.

Recruitment and selection is an intense process involving background investigations, medical and psychological screening, and polygraph examinations. This process is to ensure the integrity and fitness of all persons to be employed and vested with the public's trust. The Department hired 39 new employees in 2007.



PIO Lieutenant James McGee provides information at a press conference 2008

FY Annual Report 2007-08

Research, Planning and Management

The Research, Planning, and Management Unit, under the direction of Sergeant Frances Watson, is responsible for Community Affairs (Community Relations, Crime Prevention and Victim/Witness Assistance), Accreditation/Certification, management of the Roswell Safe Light Program, oversees light duty officer assignments, staff inspections and Special Projects. The mission of this Unit is to provide clear, functional direction and support to the Roswell Police Department's management and operational staff, as well as develop programs to further the Department's citizen oriented policing policies. This Office reports directly to the Chief of Police.

Accreditation

The Research, Planning, and Management Unit maintains a set of files to demonstrate proof of compliance to Department policies and procedures based on professional law enforcement standards established by the Commission on Accreditation for Law Enforcement Agencies (CALEA). Several new standards were established by CALEA requiring the Unit to direct the institution of new policies and procedures. The police department has maintained the distinction of accreditation since 1995. In addition, the department was awarded Georgia State Certification in 2005. A set of files is also maintained to demonstrate proofs of compliance to Certification standards specific to the State of Georgia. Through these programs the Department continues to demonstrate a dedication to professionalism for the citizens of Roswell. Sergeant Watson and Detective Montezinos are registered with the Georgia Police Accreditation Coalition as CALEA mock on-site assessors and with the Georgia Association of Chief of Police as on-site assessors for the Certification process. Detective Montezinos is a registered Team Leader for State Certification.

In 2008, Detective Montezinos was recruited by CALEA to be trained as an assessor. His fluency in Spanish will be utilized in assessments for Mexican police agencies seeking accreditation. Sergeant Watson is also slated to attend assessor training in the upcoming year. The Unit, Department, and City will benefit greatly from the experience these individuals will garner assessing other law enforcement agencies.



The Georgia State Certification Seal. Certification is a program sponsored by the Georgia Association of Chiefs of Police and the Georgia Sheriffs' Association.



The CALEA Seal is gold and blue representing the shining values and the "thin blue line" of law enforcement. (Information courtesy www.CALEA.com)

Research, Planning and Management

Special Projects

During 2007-08 this Unit oversaw the City's automated red light camera program. This program requires sworn personnel to review and confirm the camera system properly captured each violation and properly identified the vehicle involved in the violation. If the officer confirms a violation, a citation is sent to the vehicle's registered owner.

When the video recording does not support a violation or there are extenuating circumstances apparent on the recording that do not support a violation the officer reviewing the video denies the violation and no citation is sent. Although views of the violation are available on-line the Unit will schedule viewings of recordings and explain the court procedures as a service to individuals receiving citations who may want to contest a citation or need additional information. An officer familiar with the red light camera review process is required to attend the administrative hearings conducted in the Roswell Municipal Court whenever a citation is contested.

In 2007, Sergeant Watson conducted a thorough Staff Inspection. A Staff Inspection is an in-depth and objective review of all components of the Department. The review addresses all operational activities, facilities, property, equipment, and personnel. It is a management tool used to confirm that established administrative procedures are being adhered to. A Staff Inspection is required by policy at least every three years.

Research projects conducted included creating a handbook for Department Chaplains, a review of required personal protective equipment for officer responding to situations involving hazardous materials, and research on new award programs requested by the Chief of Police. The Unit continued the regular updating of policies and procedures and provided polygraph services to all divisions.

Sergeant Watson represented the Department in the Roswell Emergency Management Committee which is developing a City Emergency Management Plan under the guidance of the Roswell Fire Department.

Community Affairs

The **Community Relations/Crime Prevention Unit** provides positive interaction between the Department and the community. Education in crime prevention is also the responsibility of this Unit. In FY 2007-08, the Crime Prevention Specialist, Lawanda Kornegay, assigned to this Unit, along with officers in the Department, conducted approximately 300 educational classes, organized 22 Neighborhood Watch training programs and coordinated 27 "ride-alongs" with officers.



The 18th Annual Citizens' Police Academy.

Research, Planning and Management

This Unit conducted 131 child restraint seat inspections, along with class instruction to groups on child restraint safety. In addition, the Unit conducted 23 tours of the Law Enforcement Center, produced the Department's annual report, and coordinated the 18th annual Citizens Police Academy. The Crime Prevention Specialist also instructed regular classes for Roswell's 4th annual "Safety Town" and taught at two Boy Scout merit badge clinics.

These, and other numerous activities, demonstrate the Unit's commitment to the Department's community oriented policing efforts.

Various topics on crime prevention can be found on the City's website, www.roswellgov.com, under the Police Department section.



Crime Prevention Specialist Lawanda Kornegay is skilled at providing age appropriate information while conducting classes at Roswell's "Safety Town" in March 2008.



Making the public aware of how the Department functions is an important part of our community relations efforts.
"2008 National Night Out Against Crime"



SWAT Officer Andy Reach helps a citizen try on a tactical ballistic vest during the "2008 National Night Out Against Crime"

Support Services Division

FY Annual Report 2007-08

The Support Services Division, under the direction of Major C. M. Brown, is responsible for providing logistical support and guidance to the operating functions of the police department. Services provided by this Division include Detention Center Operations, E911 Communications, Records and Identification, Inventory Control, Information Systems and Business Operations.

Support Services Programs

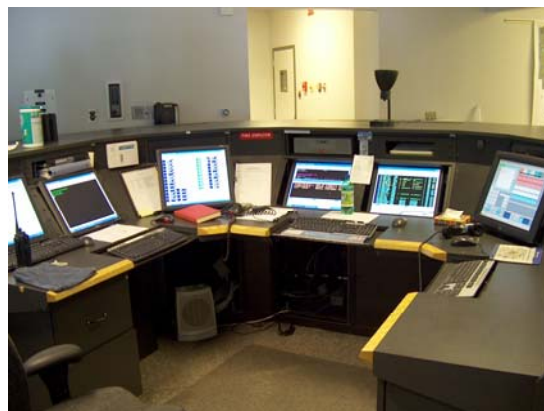
Business Operations Provides support in developing department annual operating and capital budgets and monitoring expenditures during the year. Coordinates with City Finance Department to provide asset control.

The Records Section receives, maintains and distributes records of Police activity within the department. Staffed by five Records Clerks, this section responds to all open records requests including accident and incident reports and any request for documentation relating to Police activity. Accident reports can be viewed on line at: <http://roswellga.policereports.us/>.

Inventory Control A Quartermaster manages a warehouse stock of operating supplies and uniform components for the department. Responsibilities include ordering, receiving, inventorying and issuing uniforms. The quartermaster also works with the City's Accounts Payable and Purchasing departments to coordinate requisitioning and payment activities for non-stock items.

Administrative Support Five Administrative Specialists provide support to the Department and to all who visit or call the Department. They maintain, distribute and create forms, files, reports, and perform secretarial services as well as assisting and directing public requests for information and service.

The **Communications Center** provides dispatch and E911 services for the cities of Roswell and Mountain Park, to include police, and fire / rescue services. Eighteen communications officers work three shifts, supervised by an E911 manager. Dispatchers are Emergency Medical Dispatch, CPR, GCIC and POST certified. All 911 dispatchers have also completed the National Incident Management Training through FEMA. In the fall of 2006, the E911 Center installed a new digital system. This new system provides for communication with multiple new agencies. The Center handled 106,559 police calls for service and over 5,000 fire and rescue calls in FY 2007-08. The Communications Center routinely has four dispatchers per shift, monitoring nine radio frequencies, with capabilities to monitor over 80 more when necessary. In addition, the dispatchers are responsible for ten E911 phone lines and over forty emergency and non-emergency phone lines. Calls for service are entered into the Computer Aided Dispatch (CAD) system and information is maintained on the IBM AS/400 mainframe. The 911 Center is a highlight of Police Department tours for the community, schools and organizations.



The dispatch console is "Mission Central" for all public safety activities. Consistent communication is essential for a professional agency.

Support Services Division

The **Information Systems Section** provides help desk and hardware support to maintain the integrity of data and systems. This includes Computer Aided Dispatch (E911) , 130 Field Reporting ToughBook laptops in service, the Crimes and Jail databases on the AS400 mainframe, as well as desktop applications.

Crime Analysis A Crime Analyst is responsible for analyzing data to identify patterns in criminal activity to facilitate directed patrol. The Crime Analyst also provides statistical and UCR reporting for the department and the GCIC.

Permits provides enforcement of select business licensing ordinances by reviewing applications, collecting fees and issuing permits for liquor pouring and handling, massage therapy, vehicles for hire and public solicitation licenses. They also provide fingerprinting service to the public.

Detention Center

The Center has three shift supervisors and requires a staff of twenty-six detention officers. The Detention Center houses persons sentenced by the City of Roswell Municipal Court.

The Detention Center houses misdemeanants and felons awaiting trial. The Center processed 3,888 charged misdemeanants and 366 charged felons in the 2007-08 budget year. The Center also processed 3429 males and 825 females for a total of 4254 inmates. The Detention Center has increased bed space from 57 inmates to 68 inmates.

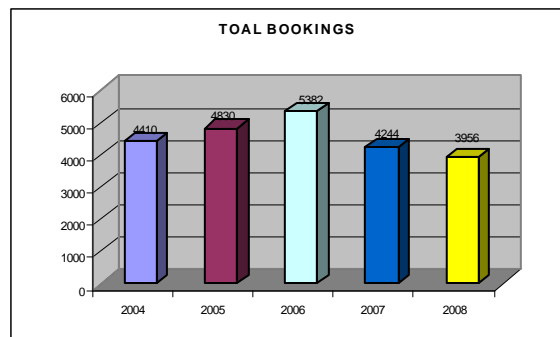
The Detention Center has had some renovations during this budget. The "Booking Area" was given new flooring. Window Tint has been added to the interior and exterior windows of the jail to block out inmate visibility.



Roswell Police Department
Detention Center

New bunk beds and tables were added to two pods so that the jail could better accommodate inmate population. Magnetic door locks with key pad entry have been installed for more security of the admin and supply storage areas.

The Detention Center offers church services in English and Spanish on Sundays and Bible Study on every Tuesday. AA meetings are offered weekly on Mondays. The Center has a library offering books in several languages, including religious and educational material. A full time cook prepares three well balanced meals based on a menu designed by a state licensed dietician.



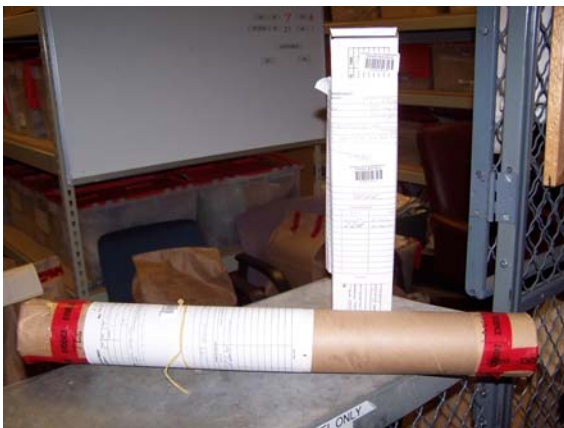
Support Services Division

The Detention Center has also implemented a promotional position called D.O. II. These officers are transporting officers that assist the Police Department with inmate transports. They transport inmates to and from court appearances and they handle medical transports of inmates to the medical area of the jail. They also conduct Inmate Worker details offsite. D.O. II officers are allowed to carry weapons and are Emergency Vehicle Operations Course certified.

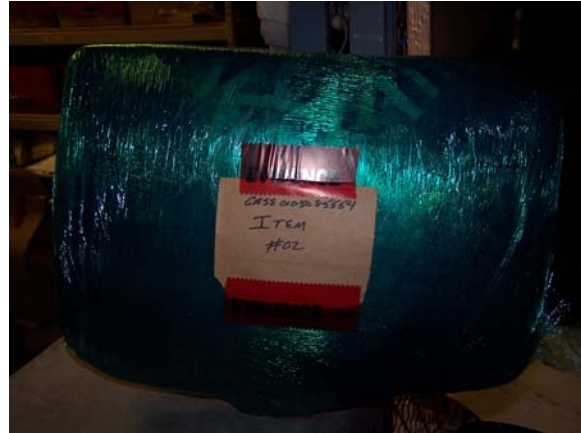
The Roswell Detention Center is also assisting in the IAQ Immigration Query program which notifies Immigration and Customs Enforcement of illegal immigrants.

Evidence Room

The evidence/property technician is responsible for receiving and handling all evidence and property. The technician is also responsible for ensuring that paperwork for all items is correctly submitted and logged into the computer database by case number and location.



Small items are packaged properly and stored in the Property Room to ensure a proper chain of custody when the evidence is presented in court.



Larger items, such as this large seizure of marijuana, are weighed and securely sealed and itemized to ensure the item cannot be unknowingly tampered with.

The evidence technician also transports evidence to the GBI lab for processing and testifies in court to the chain of custody of evidence. The evidence function has dealt with over 5,000 pieces of evidence on average for the past two years. It is also the responsibility of the evidence/property technician to follow up with officers and detectives to keep abreast of the status of the cases in which the Department holds evidence. This way, upon adjudication, items may be returned to the owner, destroyed, or auctioned.

During FY 07-08 there has been a concentrated effort to reduce the amount of inventory and review and update the procedures in use. This project has already resulted in great improvements in the organization of items within the control of the property/evidence technician. Additional storage space for property has been created which allows better control and transition for items that are too large or numerous for the evidence room to handle easily.

FY Annual Report 2007-08

Field Services Division

The Field Services Division, under the command of Major John Watson, is responsible for Uniform Patrol, Traffic Enforcement, DUI Enforcement, Criminal Investigations, Crime Suppression, Special Investigations and Fleet Maintenance. The mission of this Division is the preservation of life and property; to preserve the peace; to prevent crime and disorder; to enforce state laws and local ordinances; and to provide public service to the Roswell community. To meet these responsibilities, 78 uniform patrol officers, 21 detectives and 19 supervisors work three shifts, providing coverage 24-hours-a-day, seven-days a week, in cooperation with the other divisions.

Uniform Patrol

Day Watch patrols the City from 7:00 a.m. to 3:00 p.m. with 34 officers. A captain, two lieutenants and four sergeants supervise the officers who respond to situations which occur as the day begins for the community. The types of calls can be traffic related, criminal incidents such as armed robbery and burglary, alarms, vacation premises checks and domestic crisis intervention.

Special efforts were continued to address loitering in the Alpharetta Highway area and issues surrounding day laborers. Day watch officers are often seen patrolling residential neighborhoods creating a police presence when most residents are away from home.

Evening Watch operates with 29 officers. A captain, lieutenant and four sergeants supervise this shift that provides services from 3:00 p.m. to 11:00 p.m.

These officers respond to calls similar to those received in Day Watch, however, many of the government and private agencies that serve as a resource are operating on an as-needed basis during most of this shift. This shift receives a high volume of calls for service.

Morning Watch patrols the City with 19 officers from 11:00 p.m. to 7:00 a.m. when most businesses are closed. A captain, lieutenant and three sergeants supervise. Officers respond to routine calls for service, as well as concentrating on patrolling businesses to detect and apprehend those involved in criminal activity. Emphasis is placed on traffic contacts since people who commit criminal acts often drive to and from the crime location during these hours. These contacts often yield information pertinent to the investigation of criminal activity.

The **Bicycle Patrol** is made up of officers assigned to patrol duties full time and Bike Patrol when needed. They keep their police bicycle skills sharp as they may go into service on bicycles with short notice. They mainly work special events where crowds make patrolling on vehicles difficult.



Bike Patrol officers are a valued resource in crowded areas and for special events.

Field Services Division



Radar and laser are the most commonly used tools for speed enforcement by the Department.

Traffic Enforcement Unit

The Traffic Enforcement Unit (TEU) is responsible for the enforcement of the State's traffic codes. The focus of the unit is traffic violations and the apprehension of DUI drivers. The expectation is that speed reduction and the removal of drivers under the influence from the road will result in fewer accidents with less personal injury and property damage. TEU officers investigate all accidents resulting in fatalities or serious injuries and those involving city vehicles. All officers receive advanced training in the technical aspects of accident investigation. Because of their expertise, many of the TEU officers conduct training in traffic accident reconstruction in state and local law enforcement academies. A TEU officer is assigned to investigate all hit-and-run accidents. These are accidents in which a driver left the scene without stopping or reporting the accident to the police. During FY 2007-08, 589 hit-and-run accidents were reported and 107 of those were cleared through investigation.

The Crime Suppression Unit

The Crime Suppression Unit is an intelligence and investigative support unit responsible for identifying and addressing criminal activity within the City. Lead by a sergeant, officers, including K-9 and gang investigators, investigate criminal activity by both overt and covert means.

This street level Unit has the ability to address gang activity one day, drug enforcement the next and then switch to the enforcement of City codes. Flexibility is the key to this specialized unit.



Traffic Enforcement Motor Officer Noah Caplan discusses motorcycle safety at the "2008 National Night-Out Against Crime."

Field Services Division

Special Operations Unit

This part-time unit of four SWAT teams, under the command of Captain Donald Moss, represents personnel from all divisions. These officers respond to high risk calls needing special skills and equipment. The unit undergoes intense specialized training and members are called out to perform this function in addition to their normal responsibilities.



SWAT Team members train regularly to make acting as a single unit second nature.



The Roswell Law Enforcement Explorers Program Post 10

This program began in February 1995. It is a coed program organized in cooperation with the Boy Scouts of America. The Program is for young adults, ages 14 through 20, interested in pursuing a career in law enforcement or understanding the role of police. Members must maintain at least a "C" average in school.

Explorer activities included the Adopt-A-Road program, assisting in the Recreation and Parks Department's Easter Egg Hunt, Memorial Day festivities at Roswell City Hall and the Fourth of July fireworks extravaganza.

Some of the training received by Explorers include repelling, firearms, emergency vehicle operations, felony traffic stops, crime scene investigation, defensive tactics, domestic disputes, and criminal and constitutional law. They get to show off their learned skills in national competitions. In February 2008 they, and 179 other Explorer posts, attended Winterfest, the largest Explorer competition in the country. Due to their past expertise they hosted the Escaped Inmate Event. They also took first place in the Felony Traffic Stop Event outscoring their competitors by a large margin.

Field Services Division

School Crossing Guards

Under the command of a traffic sergeant, crossing guards are provided to local schools to assist with safe and orderly pedestrian flow. Within the City of Roswell, there are various public schools that have heavy pedestrian traffic. The Department recognizes the needs of pedestrian traffic, especially when the walkers are children. School crossing guards are fully trained in laws and procedures in directing critical school pedestrian traffic.

Criminal Investigation

The **General Investigations Section** (GIS) investigates major crimes against persons, property and juvenile related cases, and processes crime scenes. The **Special Investigations Section** (SIS) investigates organized criminal activity such as drug trafficking and vice. Both sections provide surveillance, intelligence gathering and technical equipment support for the entire Department. Criminal Investigations is committed to Community Oriented Policing. Detectives routinely speak to citizen groups, schools, civic groups and businesses advising of recent crime trends and points of awareness. Roswell Investigators continue to actively participate in the "North Metro Atlanta Intelligence Group" sharing information. Investigators from Roswell, Alpharetta, Fulton County School Police, Forsyth and Cherokee Counties meet to discuss crime trends and share intelligence information.

The **General Investigation Section** operates on two shifts, each shift commanded by a captain, a lieutenant and sergeant. Responsibilities on each shift are divided into two units:

The **Crimes Against Persons Unit** is responsible for investigating deaths, robberies, rapes, aggravated assaults and crimes against children, missing persons, juvenile runaways,

and general crimes of violence. A dedicated juvenile crimes investigator is assigned to this unit. This investigator is specifically trained and available to juvenile related crimes.

The **Crimes Against Property Unit** is responsible for investigating crimes such as burglary, auto theft, fraud, general thefts, and computer crimes. Two investigators are assigned specifically to "White Collar Crimes" which encompasses internet related fraud, money laundering, mortgage fraud and crimes involving computers. Both of these investigators are also active members of the United States Secret Service White Collar Crime Task Force in Atlanta. This unit budgeted and procured much needed forensic computer investigation software that allows trained investigators to secure computer data as evidence of crimes. A temporary duty assignment of a detective to the Federal Bureau of Investigation (FBI) Innocent Images Task Force, is assigned to investigate crimes against children via the Internet. This position investigates child sexual exploitation and child pornography manufacturer and distribution and assists the Department with additional resources, training helping to protect children.



Detective Jeff Sanders works persons crimes and specializes in crimes against children.

Field Services Division

Special Investigations Section (S.I.S.)

This Section consists of five investigators. Four investigators are assigned to Atlanta Intensity Drug Trafficking Area (HIDTA) and are working in two separate investigative groups within that unit. The fifth investigator is assigned to the Drug Enforcement Agency (DEA) Atlanta Field Division Task Force.

S.I.S. participates in the continued sharing of intelligence information with other agencies. Officers assigned to S.I.S. also participate in the North Fulton Intelligence network. They provide information on suspects who were engaged in many criminal activities in addition to drug trafficking. S.I.S. has conducted briefings to the group informing them of Atlanta HIDTA's training opportunities, intelligence gathering, and analysis capabilities. S.I.S. participation in Atlanta HIDTA has allowed the department to access intelligence information from nationwide sources that otherwise would have been unavailable. HIDTA investigators are cross designated as Drug Enforcement Administration Task Force Officers and as such, have Federal authority to

enforce United States drug laws and have on-line access to DEA information and intelligence systems. S.I.S. has shared and received valuable information from officers in Uniform Patrol that has made the operation of both units safer and more effective.

Our participation in Atlanta HIDTA has given us priority availability for classes provided by HIDTA. In addition, we have been able to attend training on the Federal level that would have been otherwise unavailable. We have two Investigators certified in investigation of clandestine labs. A major drug and health issue especially for methamphetamine production.

The Honor Guard and Color Guard

This unit began in 1996 and has progressively increased its membership. Members have participated in numerous special events for the community and are best recognized for their honored contribution to the Roswell Memorial Day Observance at the Roswell Vietnam Faces of War Monument. The members of this unit schedule regular practice meetings in order to hone their skills and present a professional and uniform appearance.



Roswell Police Department Honor and Color Guard

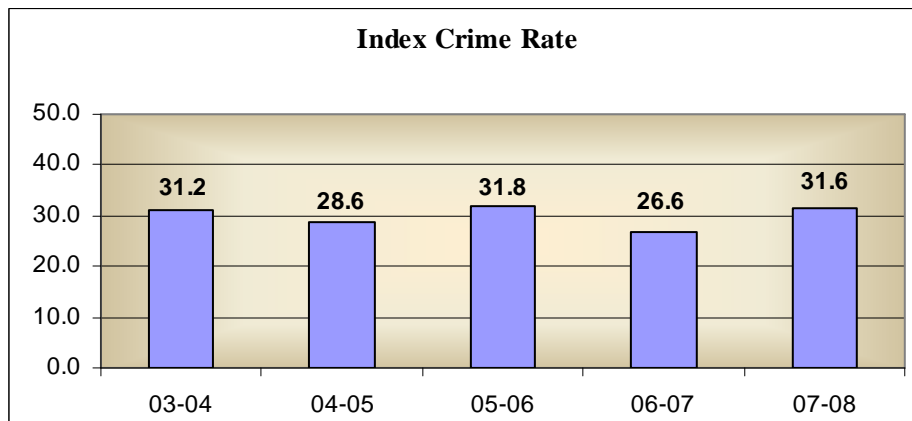
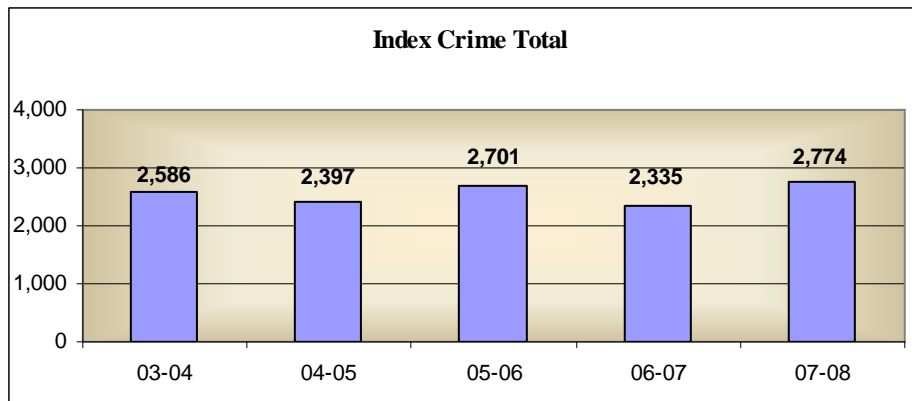
FY Annual Report 2007-08

Crime Analysis

Crime statistics are compiled to track and prevent criminal activity in the City of Roswell. The FBI has designated certain crimes, because of their frequency and severity, as Index Crimes. These crimes are: murder, rape, robbery, aggravated assault, burglary, theft, motor vehicle theft and arson. The first chart shows the number of index crimes reported to the police; the second chart shows the Index Crime Rate which is calculated per 1,000 residents and provides a measure for comparing jurisdictions

Department personnel utilize statistical analyses to aid in identifying trends, similarities, and possible perpetrators. Statistics also aid in determining timely and appropriate actions to deter criminal activities so as to maintain the quality of life enjoyed by the citizens of Roswell. These analyses are available to the public. This allows individuals and community groups to keep abreast of any criminal activity occurring in their neighborhoods and businesses. These statistics also allow those individuals considering relocation to Roswell to make well-informed decisions with regards to crime.

***The numbers below reflect our fiscal year July 07-June 08; statistics reported to the FBI are based on calendar year.**



Crime Analysis

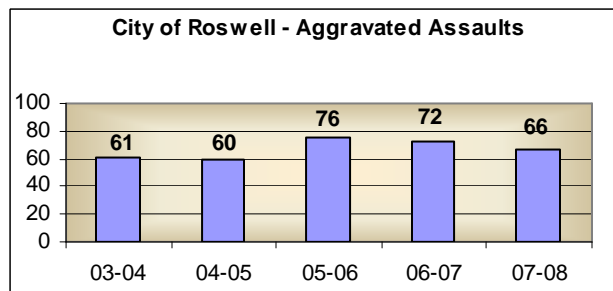
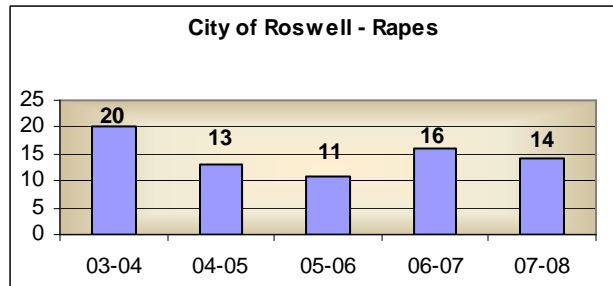
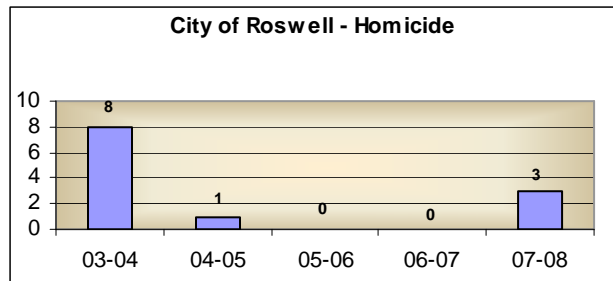
Index Crime Breakdown

Violent Crimes

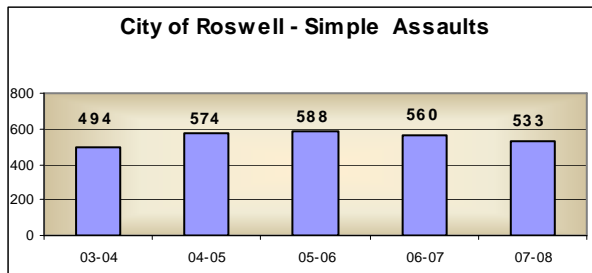
Homicide - the willful killing of one human being by another.

Rape - this category includes Rape by Force and Attempted Rape by Force reports.

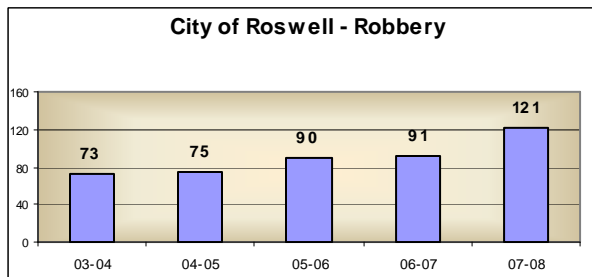
Aggravated Assaults - an unlawful attack by one person on another.



Crime Analysis



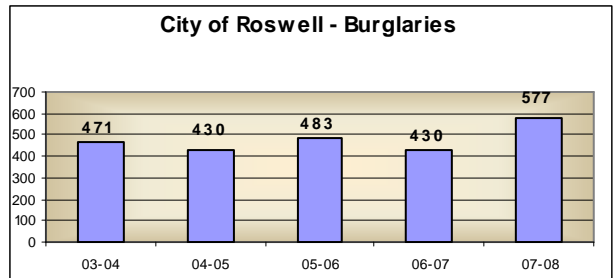
Simple Assault - do not involve a firearm, cutting instrument, or other dangerous weapon and in which there were no serious or aggravated injuries to the victims.



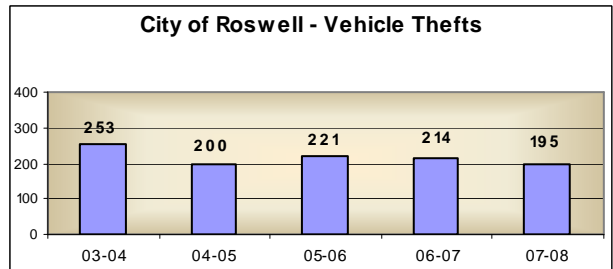
Robbery - the taking or attempting to take anything of value from the care, custody, or control of a person by force or threat of force or violence and/or by putting the victim in fear.

Crime Analysis

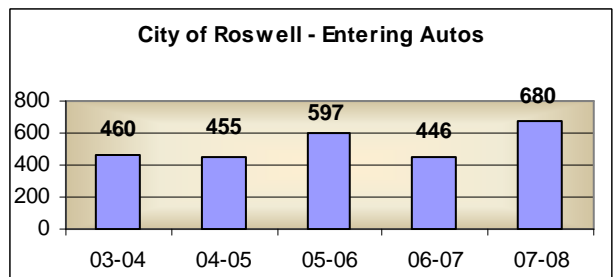
Burglary - the unlawful entry of a structure to commit a felony or a theft.



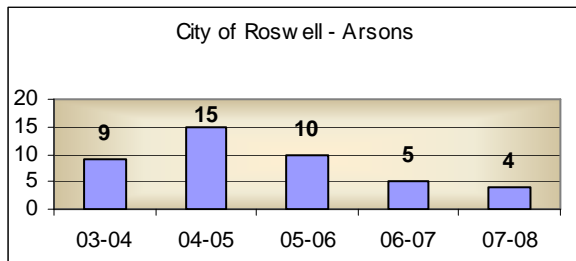
Motor Vehicle Theft - the theft or attempted theft of a motor vehicle.



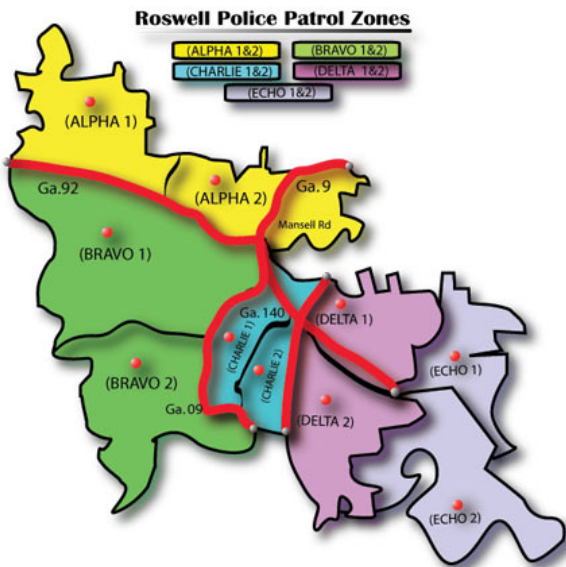
Entering Auto - the theft of articles from a motor vehicle, whether locked or unlocked.



Crime Analysis



Arson - any willful or malicious burning or attempt to burn, with or without intent to defraud, a dwelling, house, public building, motor vehicle or aircraft, personal property of another, etc.



Areas of Crime Activity

2007-08 was the tenth full year that the Roswell Police Department had ten patrol zones, thus providing more meaningful statistical analysis for comparison. The Alpha and Charlie zones had more reported activity than the other zones. Alpha 2 contains several auto dealerships and other businesses located along Alpharetta Highway (Highway 9). Charlie 1 encompasses the Roswell Police Department Law Enforcement Center where many reports are filed by the public. When these reports are filed, the Department's address is used. This negatively impacts Charlie 1 zone.

Budget Comparisons

FY Annual Report 2007-08

Operating expenses for the Department for fiscal year 2007-08 were \$17,151,574.00. This includes General Fund, E911 Fund and Confiscated Assets Fund. Costs associated with the Red Light Camera program are included with the Traffic Enforcement budget. Some costs such as liability insurance, workers compensation, office supplies, etc. have been consolidated in the Administration budget.

FY 2008 FUNDED CAPITAL PROJECTS

1. Mobile Data Terminal Lease Program	\$221,750
Allows officer to run tags and write reports from vehicle	
2. Digital In-Car Cameras	\$30,000
Provides recording equipment in Patrol vehicles	
3. Booking Floor	\$25,000
Replace worn and damaged floor in Detention Center	
4. Separate Control Panel from Fire Alarm	\$150,000
Comply with fire code at Detention Center	
5. Upgrade Radio System to Digital	\$300,000
Replaces older analog communications equipment with digital	
6. Detention Center Medical Equipment	\$20,000
Required by on site medical services provider	
7. Microwave Transmitters	\$18,000
Replace equipment used in covert investigations	
8. Specialized Seating E911	\$25,000
Replace chairs for dispatchers	

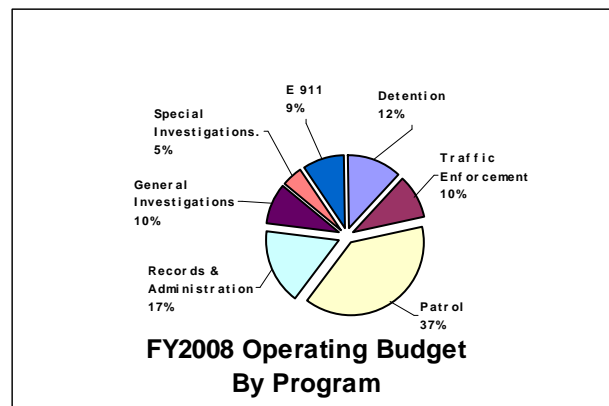
Budget by Category

Salaries and Benefits \$12,751,112
 Operating Costs \$ 2,930,711
 Capital \$ 362,750

TOTAL \$16,044,573

Funded Capital Projects

- 1. Three Additional Detention Officer positions**
 \$110,464
 Provides for one additional officer per shift reducing the inmate to officer ratio
- 2. An Additional Dispatcher for E911**
 \$36,322
 Provides for reduction in overtime to address vacation, military leave and sick leave
- 3. On Site Medical Services for Detention Center**
 \$130,000
 Provides for trained medical staff at the Detention Center reducing off site medical and transportation costs
- 4. Merit Increases for Full Time employees**
 \$366,570
 Allows the Department to provide a competitive salary in the Metro Atlanta police job market



FY Annual Report 2007-08

Commendations

Officers and civilian personnel receive commendations for professionalism, assistance given and/or courtesy to citizens or fellow employees.

Abbott, Jeffrey	1
Alexander, Tim	2
Anastasio, William	1
Austin, Fred	4
Bates, Danny	6
Battle, Richard	3
Bennett, K.L.	1
Bergmoser, Stephen	1
Booth, David	1
Brooks, Brandy	1
Browning, Silvia	2
Bruns, Brooke	1
Byrd, Adrienne	1
Cabral, Mark	1
Carr, Karen	1
Desrosiers, Ted	4
Dixon, Eric	1
Farabaugh, D.A.	1
Freeman, Matt	5
Fryson, Greg	1
Garcia, Tomas	3
Green, Linda	1
Hitt, Michael	1
Holland, Lisa	2
Hood, William	1
Howard, Tiffany	1
Howe, Rory	1
Kornegay, Lawanda	2
Lanier, Jeffrey	2
Larkins, Michael	2
Laschuma, John	1
Lathem, John	2
Lynch, Shaun	1

Macdonald, Mark	2
Major, James	1
Matthews, Mike	1
McGee, James	1
McRae, Ken	2
Merrell, Timothy	1
Minter, Brian	3
Monroe, Ronald V.	5
Moody, Michael	1
Moss, Stewart	1
Nimon, April	1
Orren, Amanda	1
Orrick, Russell	2
Pennington, Lloyd	2
Pitts, James	1
Primo, Trevor	3
Quinn, Christian	1
Robinson, Kesa	1
Roe, Cam	2
Rogers, Nicole	1
Rooker, Cindy	1
Ruff, Joel	2
Sanders, Jeffrey	2
Sasso, Paul	2
Schneider, Michelle	2
Scuderi, Iris	2
Smith, William E	2
Snyder, Justin	1
Spann, Robert	1
Stancil, Tammy	2
Stephens, Jerimiah	1
Thompson, Shawn	1
Walters, Scott	1
White, Chad	1
Williams, Tommy	1
Williams, St.Claire	1
Wilson, Frank	2
Wolo, Jackie	1

FY Annual Report 2007-08

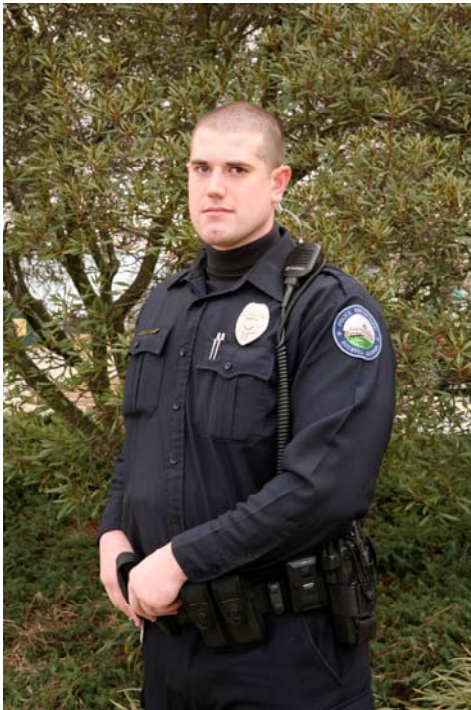
Awards

Captain Donald Moss was awarded the **“Life Saving Medal”** from Chief T. E. Williams in July 2007 for giving life saving CPR to 18-month old Jacob Vinson who was reported missing. During a concerted search by numerous officers Captain Moss found the child had fallen into a neighbor’s Koi pond.

Although a Shift Commander, Captain Moss is known for his regular involvement in police activities in the field.



Captain Donald Moss Life Saving Medal recipient with Mayor and Council.



Police Officer of the Year 2007
Joshua Ott

Police Officer I Joshua Ott was recognized as **“Officer of the Year 2007”** for his aggressive enforcement activities especially in the area of alcohol and drug related traffic enforcement. During the year 2007, Officer Ott made 299 DUI traffic arrests, greatly aiding in the Department’s efforts to make the streets safe for the City’s residents and visitors through DUI enforcement.

Awards



Detention Officer of the Year 2007
Sandra Lopez

Sandra Lopez was recognized as **“Detention Officer of the Year 2007”** for her total dedication to the smooth operation of the Roswell Detention Center. Her experience is exemplified in her actions as an Officer-In-Charge in the absence of the Shift Supervisor and as a training officer bringing new recruits up to speed in the inner workings of the job.

Being bi-lingual (English and Spanish) has made her a valued resource both in the Detention Center and for all sworn and civilian employees needing a translator at the Law enforcement Center.



Civilian Employee of the Year 2007
Tracey Hanrahan

Tracey Hanrahan was recognized as **“Civilian Employee of the Year 2007”** in recognition of her service to the Department and its employees. As the only full-time employee assigned to the Training Unit she took on many varied duties to ensure officers and civilian employees received the training necessary to ensure a professional Department. A few of these duties included overseeing employee training files, scheduling law enforcement classes at the Roswell-Alpharetta Public Safety Training Center, managing expenses and reimbursement for training related travel, and functioning as the Department Payroll Manager.

Awards

EXCELLENCE IN SERVICE AWARD

The Roswell Police Department “**Excellence in Service Award**” was instituted to establish a standard of excellence among Department members in their interaction with citizens and other members of the Department. Employees given this award underscore the commitment to enhance the Department’s work environment and a commitment to provide service excellence to the community. It recognizes exemplary contributions that exceed the expected responsibilities of an individual’s position at the Department.

In 2007 the Field Training Officers of the Roswell Police Department received this prestigious recognition.

EXCELLENCE IN SERVICE AWARD

FTO Stephen Bergmoser
FTO Mark Cabral
FTO Karen Carr
FTO Linnea Coombs
FTO Dana Deweese
FTO Matt Gatto
FTO Chad Harris
FTO Anthony Hill
FTO David Moss
FTO Jeff Payne
FTO Andy Reach
FTO Tammy Stancil
FTO Scott Walters
FTO Jason Wescott
FTO Chad White
FTO Cory Yeager



ROSWELL POLICE DEPARTMENT