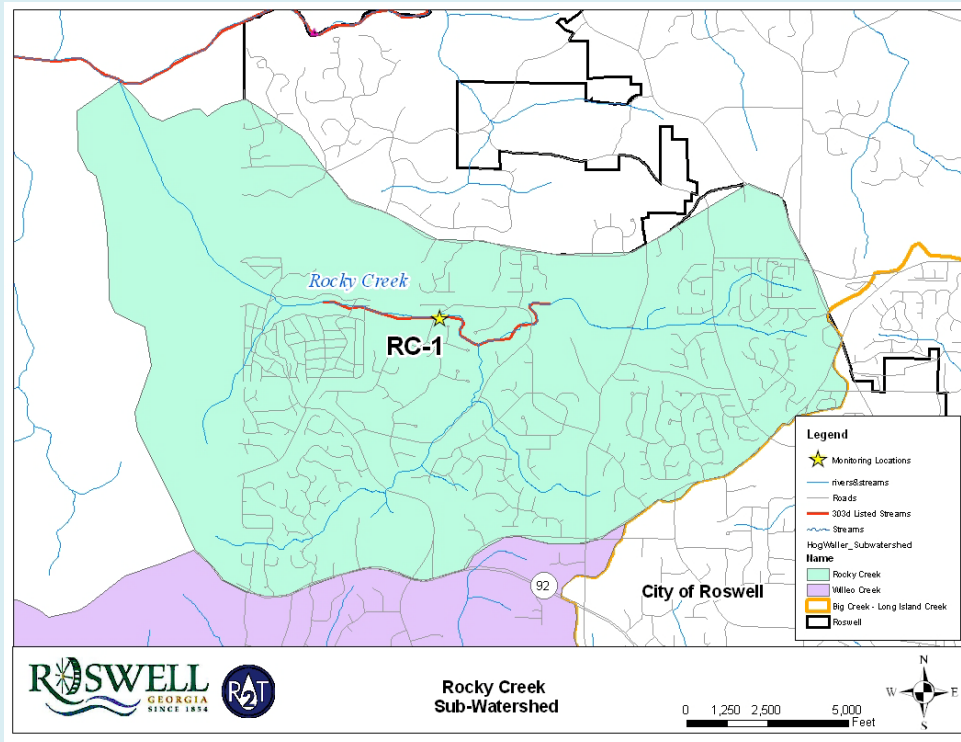


## Roswell Stream Highlight - Rocky Creek



### Rocky Creek

Rocky Creek is a tributary to Little River in the Etowah River Basin, located in the City of Roswell. Rocky Creek currently has elevated levels of bacteria specifically *fecal coliform* which are likely caused by the influence of urban runoff. Urban runoff can also cause stream bank failure as seen in the photo below. As residents of the City of Roswell, we can help to improve stream conditions and keep Rocky Creek clean.



During storm events, the stormwater flows from roof tops, lawns, roadways and collects pollutants and debris. The storm water then drains to the nearest creeks, rivers and lakes without any treatment or removal of the pollutants. The pollutants in Rocky Creek can be harmful to the ecosystem, and impact the fish and other aquatic life. This is a picture of bank erosion along Rocky Creek. There are many small changes we can do to improve the water quality in Rocky Creek.

## Top Ten tips we can do to improve Rocky Creek:

1. Check and maintain your septic system regularly. Failing septic systems can cause untreated sewage to leak into the groundwater which provides the base flow of Rocky Creek. For additional guidance on septic system maintenance, visit USEPA website. <http://cfpub.epa.gov/owm/septic/index.cfm>
2. Install rain barrels and rain gardens at home to decrease stormwater.
3. Plant and maintain native riparian vegetation for landscaping around stream banks. Avoid using invasive species like English Ivy, which can suffocate or out-compete native plants and trees. Visit Georgia Soil and Water Conservation for additional guidance on Stream bank Restoration and for replanting bare areas near the stream.  
  
[http://www.gaepd.org/Files\\_PDF/techguide/wpb/Streambank\\_and\\_Shoreline\\_Stabilization\\_Guidance\\_Book\\_2010.pdf](http://www.gaepd.org/Files_PDF/techguide/wpb/Streambank_and_Shoreline_Stabilization_Guidance_Book_2010.pdf)
4. Minimize or eliminate the use of pesticides, herbicides and chemical fertilizer. If you have to use them, read the label to ensure proper usage and application rates.
5. Pick up your pet waste and dispose of it in the trash can. Pet waste contributes to elevated levels of bacteria in the stream from stormwater.
6. Pick up litter, leaves and debris around the creek area.
7. Don't let greywater from your washing machine run into a storm drain or creek.
8. Visit commercial car washes that recycle where the water is recycled before discharged to a sanitary sewer. Use lawns, not pavements to wash cars at home, if needed.
9. Drain pools, or spas into the sanitary sewer system, not to the creek, street or storm drain.
10. Fix oil or other vehicle fluid leaks. Recycle oil and antifreeze.

We can do more to help Rocky Creek by reporting pollution to the WRD, Nick Pezzello at [swmp@roswellgov.com](mailto:swmp@roswellgov.com) or (770) 641-3707, such as illegal dumping, clogged and failed catch basins and outlets, potential contaminants, illicit discharges and connections, and sewer overflows, etc. For more information on preventing water pollution visit the Clean Water Campaign website.

<http://www.cleanwatercampaign.com/>