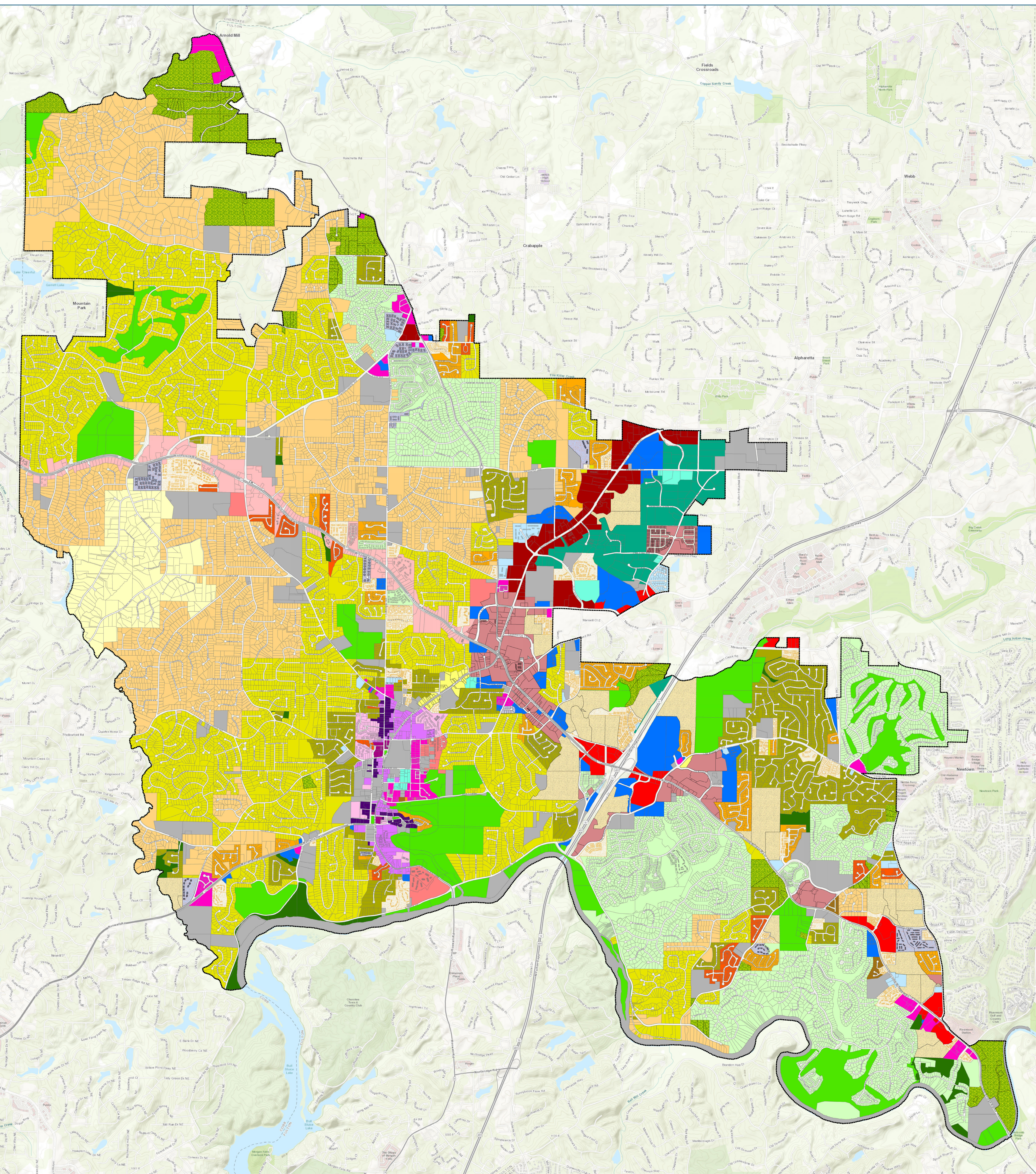


Unified Development Code (UDC)



- ### Legend
- City Limit
 - Residential Districts
 - AG-43 - Agricultural
 - RS-87 - Single Family Estate
 - RS-30 - Single Family Estate
 - RS-18 - Single Family Suburban
 - RS-12 - Single Family Suburban
 - RS-9 - Single Family Small Lot
 - RS-6 - Single Family Small Lot
 - RS-4 - Single Family Small Lot
 - R-CC - Residential Cottage Court
 - R-TH - Residential Townhouse
 - RM-2 - Residential Multi-Family
 - RM-3 - Residential Multi-Family
 - PRD - Planned Residential Development
 - Corridor and Node Districts
 - PV - Parkway Village
 - RX - Residential Mixed Use
 - NX - Neighborhood Mixed Use
 - CX - Commercial Mixed Use
 - SH - Shopfront Mixed Use
 - CC - Commercial Corridor
 - CH - Commercial Heavy
 - Downtown Historic Districts
 - DR - Downtown Residential
 - DX - Downtown Mixed Use
 - DS - Downtown Shopfront
 - DH - Downtown House
 - Employment Districts
 - OR - Office Residential
 - OP - Office Park
 - IX - Industrial Flex
 - IL - Light Industrial
 - Civic and Open Space Districts
 - CIV - Civic and Institutional
 - REC - Parks and Recreation
 - CON - Conservation and Open Space

1 inch = 1,200 feet
1:14,400
0 1,200 2,400 Feet

Created By: Angel Clark Created Date: 09/2019 Updated Date: 4/9/2019 2:51:00 PM
Document Path: C:\2017 Website_Updates\UDC\MapUDC.mxd

Sources: City of Roswell GIS (2019); Esri (2019)
The City of Roswell attempts to create, use, and maintain accurate spatial data. However, the City of Roswell does not warrant the accuracy or currency of the data contained herein. All data is provided "as is" with all faults, without warranty of any kind, either expressed or implied, including, but not limited to, the implied warranties of merchantability.

Please Visit Roswell's Interactive GIS Map: www.roswellgov.com/map

